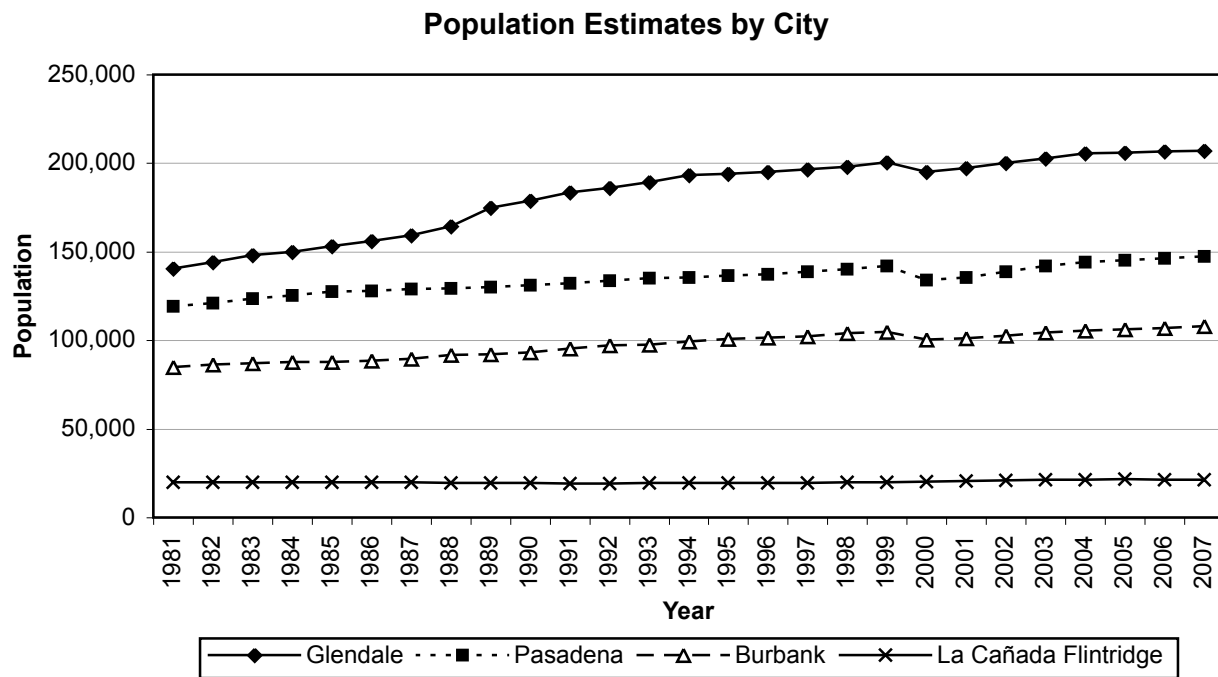


1. Population of Glendale and Neighboring Cities

City	1999	2000	2001	2002	2003	2004	2005	2006	2007
Glendale	200,400	194,973	197,088	200,000	202,500	205,422	205,785	206,578	207,157
Pasadena	141,900	133,936	135,332	138,700	142,000	144,060	145,314	146,327	147,262
Burbank	104,800	100,316	101,324	102,700	104,400	105,477	106,107	107,018	107,921
La Cañada Flintridge	19,904	20,318	20,624	20,960	21,219	21,418	21,535	21,340	21,353



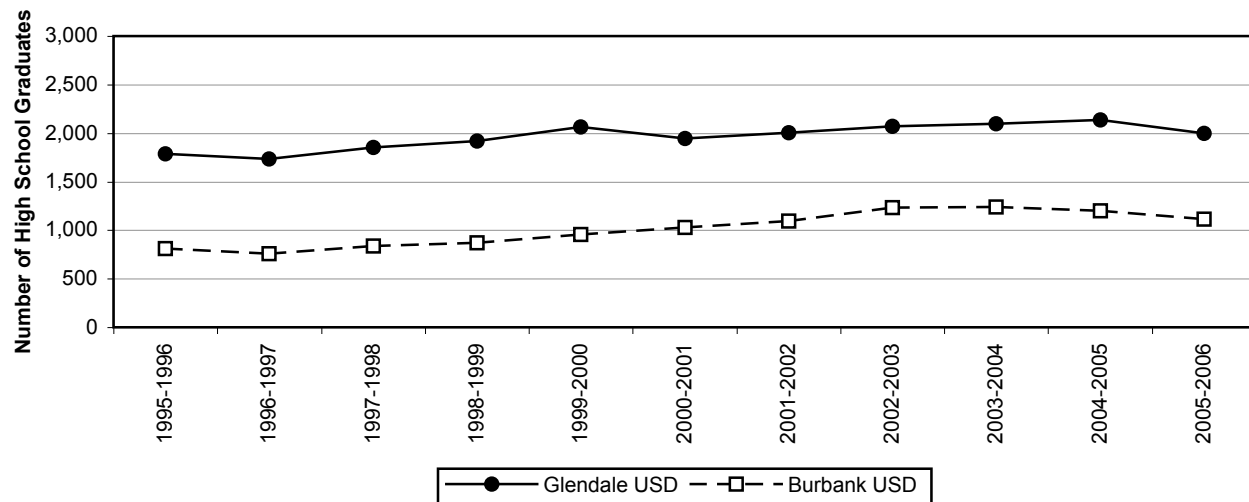
Data Source: California Department of Finance

2. High School Graduates and Projections

Number of High School Graduates

District	1997-1998	1998-1999	1999-2000	2000-2001	2001-2002	2002-2003	2003-2004	2004-2005	2005-2006
Glendale USD	1,850	1,921	2,063	1,948	2,002	2,069	2,097	2,133	1,996
Burbank USD	839	873	955	1,027	1,094	1,232	1,238	1,202	1,117

Number of High School Graduates

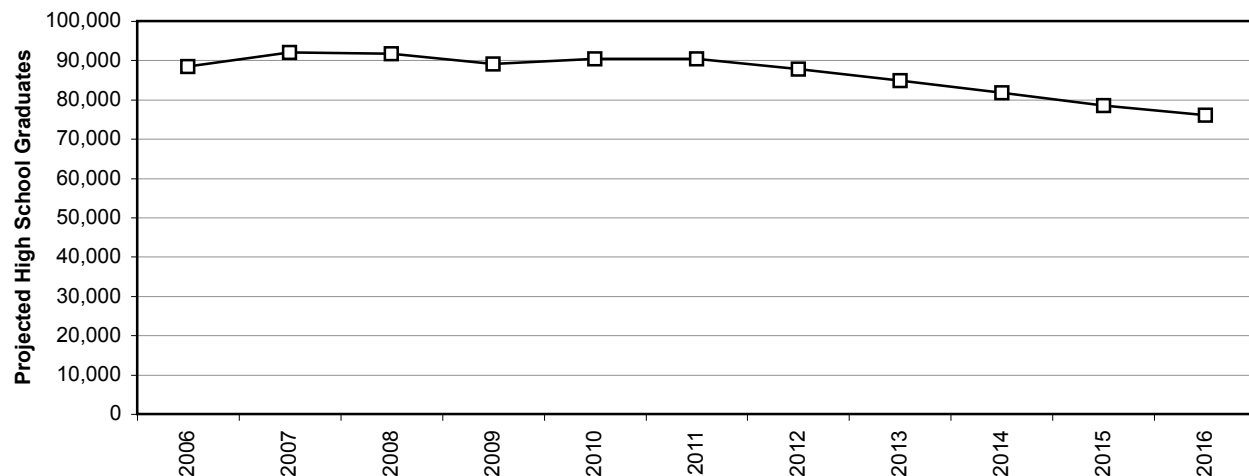


Data Source: California Department of Education

Projections of High School Graduates (Los Angeles County)

County	2008	2009	2010	2011	2012	2013	2014	2015	2016
Los Angeles County	91,762	89,009	90,371	90,394	87,836	84,883	81,832	78,559	76,093

Projected High School Graduates, Los Angeles County

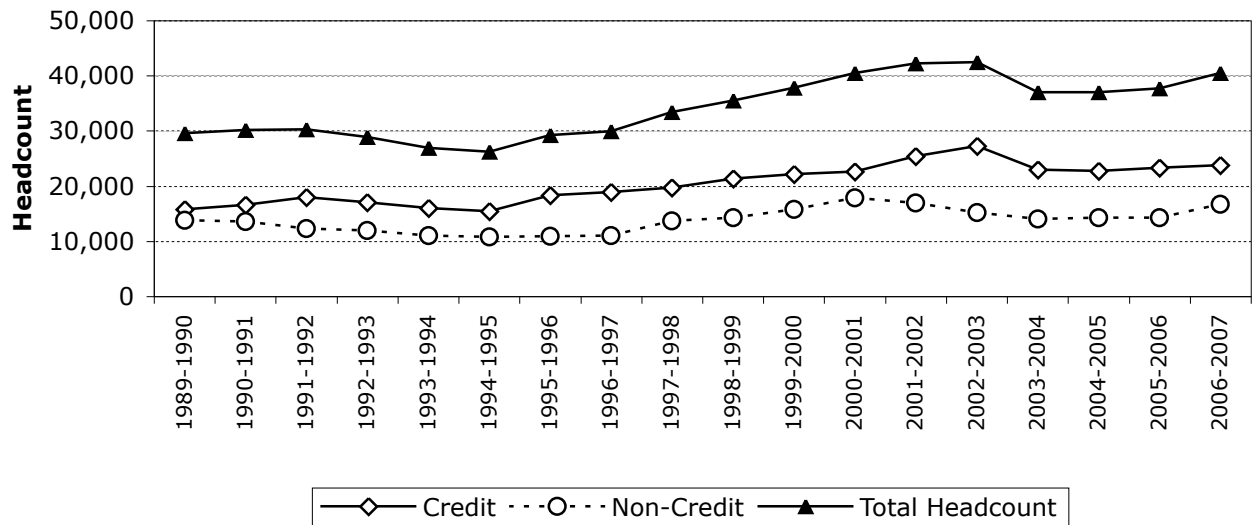


Data Source: California Department of Finance

3. Glendale Community College Credit and Noncredit Students

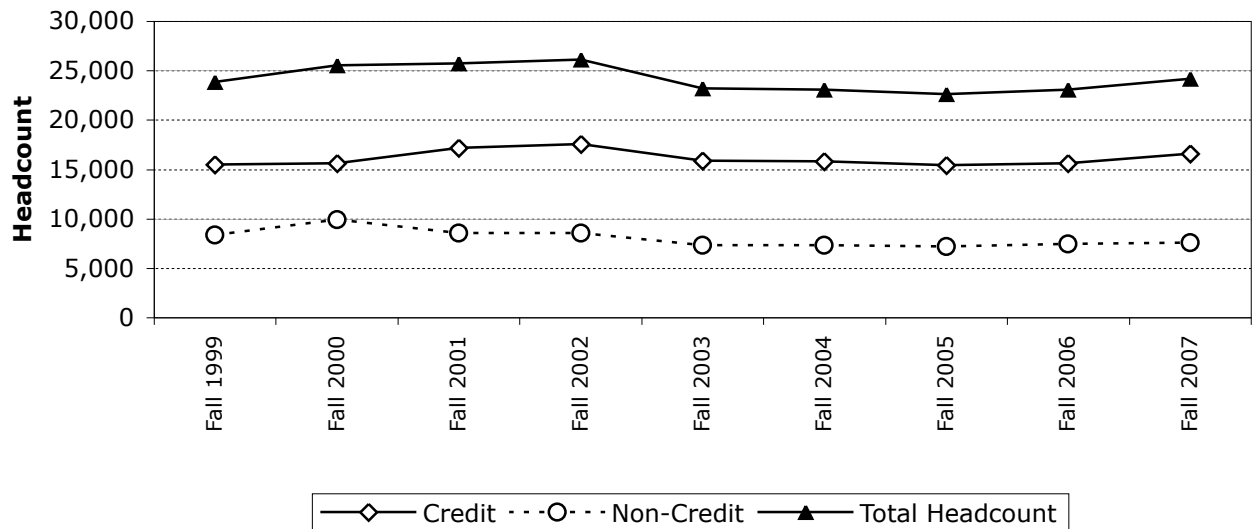
Annual Headcount Enrollment

Headcount Enrollment	1998-1999	1999-2000	2000-2001	2001-2002	2002-2003	2003-2004	2004-2005	2005-2006	2006-2007
Credit	21,331	22,142	22,593	25,350	27,232	22,942	22,717	23,371	23,738
Non-Credit	14,212	15,734	17,864	16,913	15,208	14,091	14,278	14,277	16,715
Total Headcount	35,543	37,876	40,457	42,263	42,440	37,033	36,995	37,648	40,453



Fall Semester Headcount Enrollment

Headcount Enrollment	Fall 1999	Fall 2000	Fall 2001	Fall 2002	Fall 2003	Fall 2004	Fall 2005	Fall 2006	Fall 2007
Credit	15,504	15,630	17,160	17,555	15,877	15,784	15,415	15,588	16,560
Non-Credit	8,337	9,890	8,538	8,556	7,326	7,313	7,178	7,460	7,581
Total Headcount	23,841	25,520	25,698	26,111	23,203	23,097	22,593	23,048	24,141

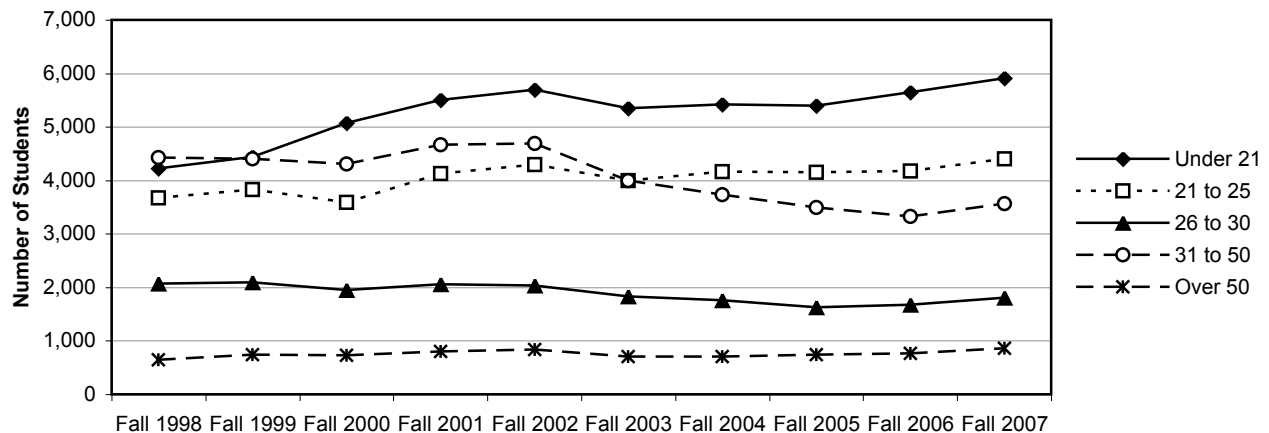


4. Age of GCC Students

Age of Credit Students

Age Group	Number of Students				Percent of Students			
	Fall 2004	Fall 2005	Fall 2006	Fall 2007	Fall 2004	Fall 2005	Fall 2006	Fall 2007
Under 21	5,423	5,394	5,648	5,917	34%	35%	36%	36%
21 to 25	4,166	4,149	4,178	4,408	26%	27%	27%	27%
26 to 30	1,757	1,628	1,673	1,807	11%	11%	11%	11%
31 to 50	3,735	3,493	3,326	3,563	24%	23%	21%	22%
Over 50	702	743	763	863	4%	5%	5%	5%

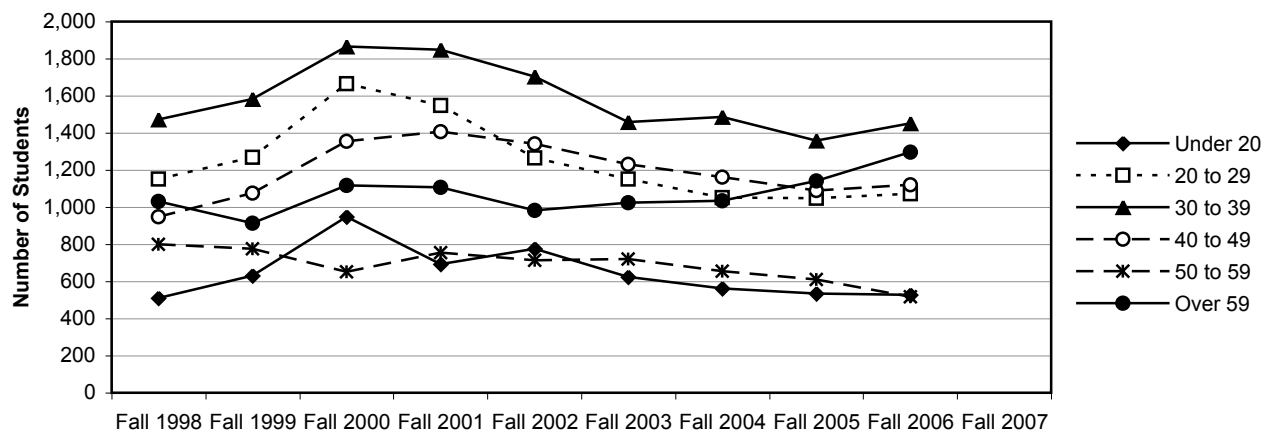
Age of Credit Students



Age of Noncredit Students

Age Group	Number of Students				Percent of Students			
	Fall 2004	Fall 2005	Fall 2006	Fall 2007	Fall 2004	Fall 2005	Fall 2006	Fall 2007
Under 20	563	533	529		9%	9%	9%	
20 to 29	1,053	1,047	1,074		18%	18%	18%	
30 to 39	1,487	1,360	1,452		25%	24%	24%	
40 to 49	1,161	1,090	1,122		19%	19%	19%	
50 to 59	654	612	516		11%	11%	9%	
Over 59	1,036	1,142	1,298		17%	20%	22%	

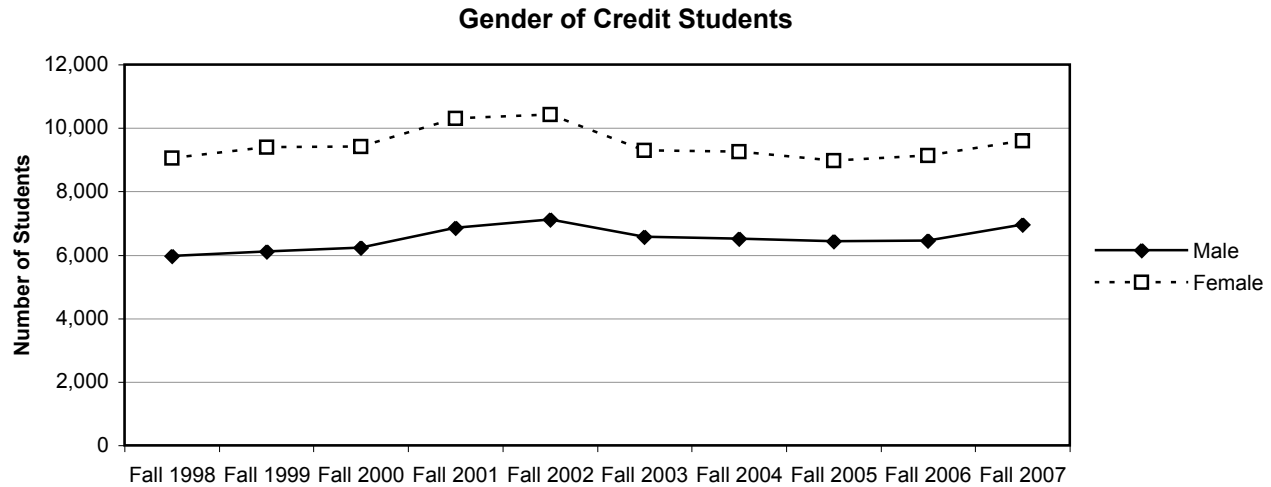
Age of Noncredit Students



5. Gender of GCC Students

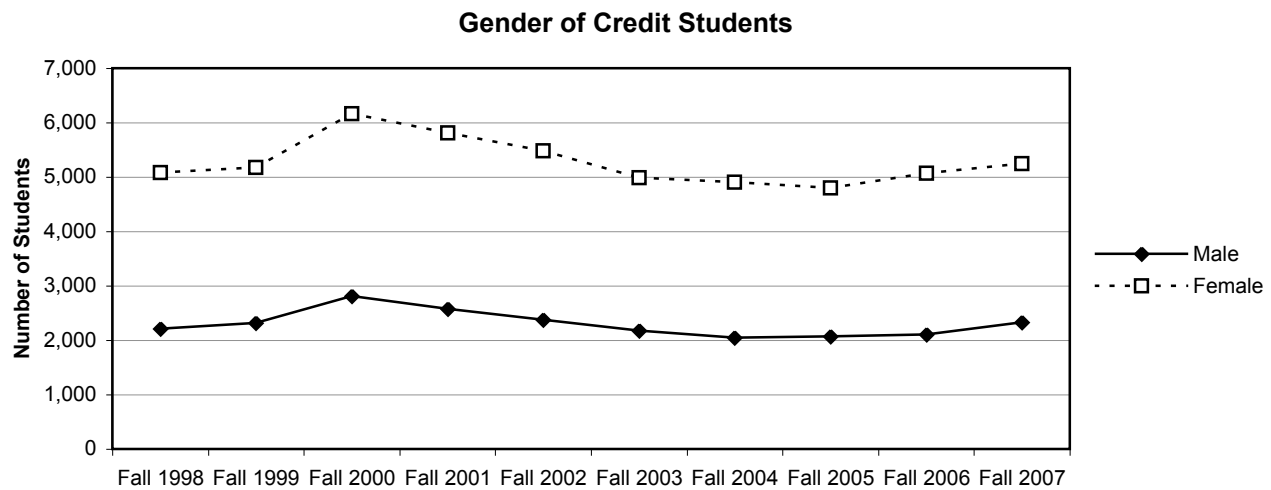
Gender of Credit Students

Gender	Number of Students				Percent of Students			
	Fall 2004	Fall 2005	Fall 2006	Fall 2007	Fall 2004	Fall 2005	Fall 2006	Fall 2007
Male	6,517	6,430	6,455	6,964	41%	42%	41%	42%
Female	9,267	8,976	9,133	9,596	59%	58%	59%	58%



Gender of Noncredit Students

Gender	Number of Students				Percent of Students			
	Fall 2004	Fall 2005	Fall 2006	Fall 2007	Fall 2004	Fall 2005	Fall 2006	Fall 2007
Male	2,047	2,066	2,108	2,329	29%	30%	29%	31%
Female	4,902	4,799	5,072	5,248	71%	70%	71%	69%

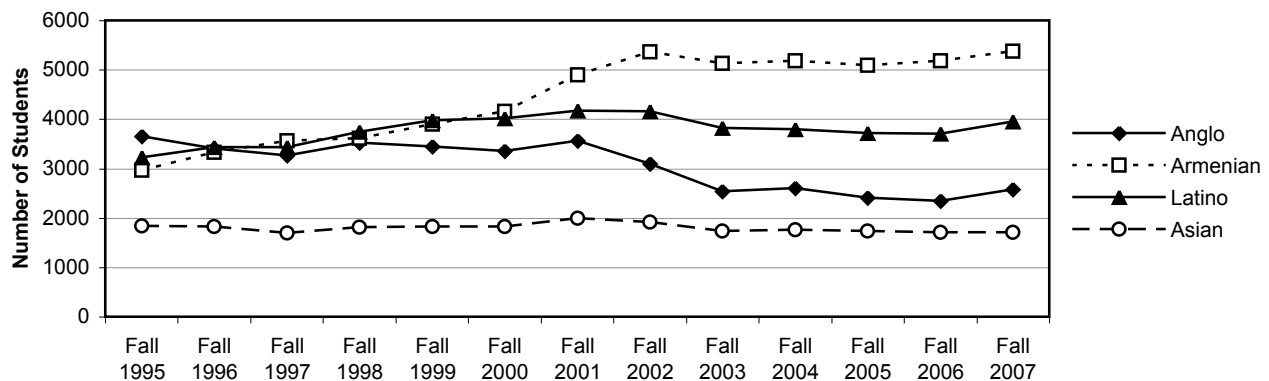


6. Ethnicity/Race of GCC Students

Ethnicity/Race of Credit Students

Ethnicity/Race	Number of Students				Percent of Students			
	Fall 2004	Fall 2005	Fall 2006	Fall 2007	Fall 2004	Fall 2005	Fall 2006	Fall 2007
Asian/Pac. Isl.	1,765	1,738	1,715	1,717	11%	11%	11%	10%
Black	455	432	441	486	3%	3%	3%	3%
Filipino	875	836	814	876	6%	5%	5%	5%
Latino	3,798	3,730	3,709	3,951	24%	24%	24%	24%
Anglo	2,599	2,411	2,338	2,583	16%	16%	15%	16%
Armenian	5,179	5,092	5,189	5,381	33%	33%	33%	32%
Other	1,113	1,168	1,382	1,566	7%	8%	9%	9%

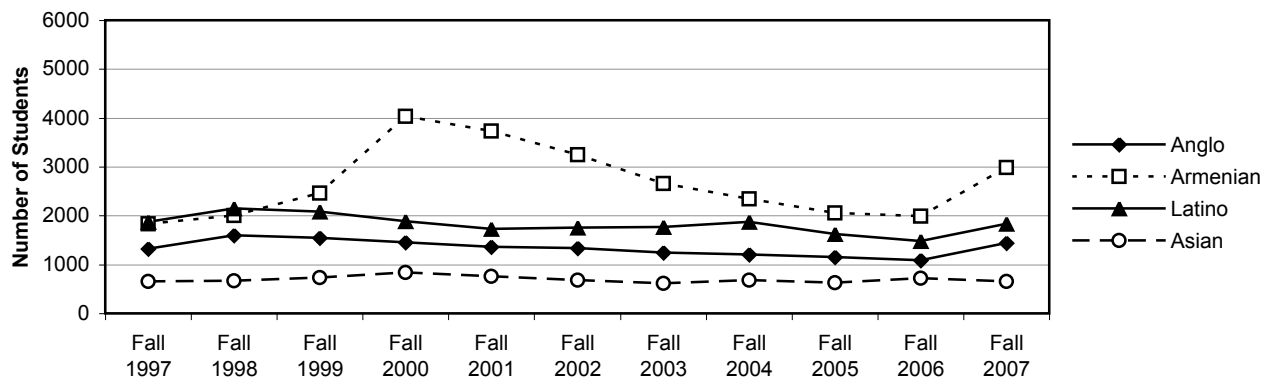
Ethnicity of Credit Students



Ethnicity/Race of Noncredit Students

Ethnicity/Race	Number of Students				Percent of Students			
	Fall 2004	Fall 2005	Fall 2006	Fall 2007	Fall 2004	Fall 2005	Fall 2006	Fall 2007
Asian/Pac. Isl.	677	635	717	661	10%	11%	12%	9%
Black	88	63	74	79	1%	1%	1%	1%
Filipino	262	209	192	290	4%	4%	3%	4%
Latino	1,872	1,629	1,485	1,839	28%	27%	26%	24%
Anglo	1,201	1,147	1,088	1,447	18%	19%	19%	19%
Armenian	2,350	2,052	1,989	2,983	35%	34%	34%	39%
Other	251	229	238	282	4%	4%	4%	4%

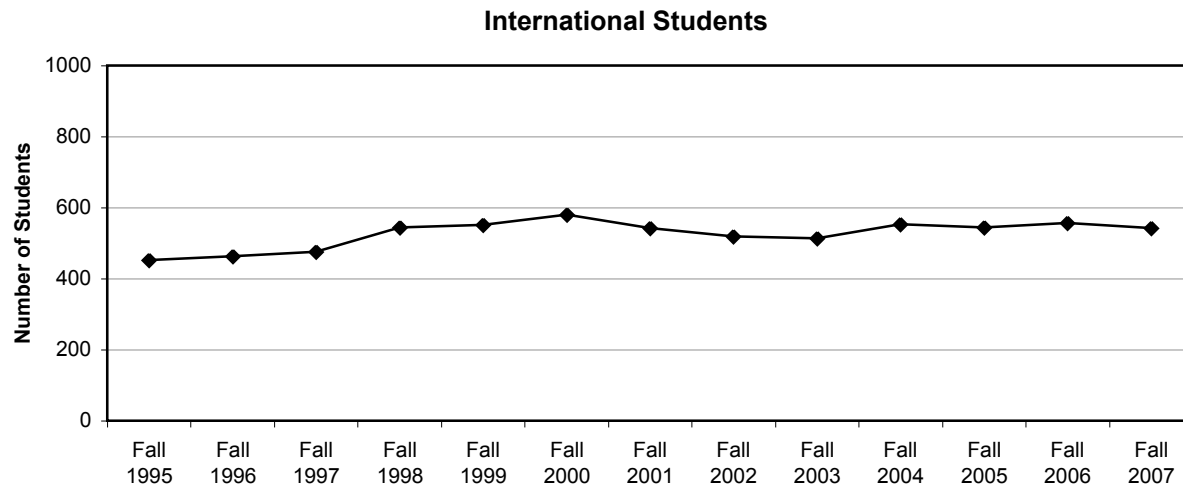
Ethnicity of Noncredit Students



7. International Students

Credit Students Studying on Student Visas (International Students)

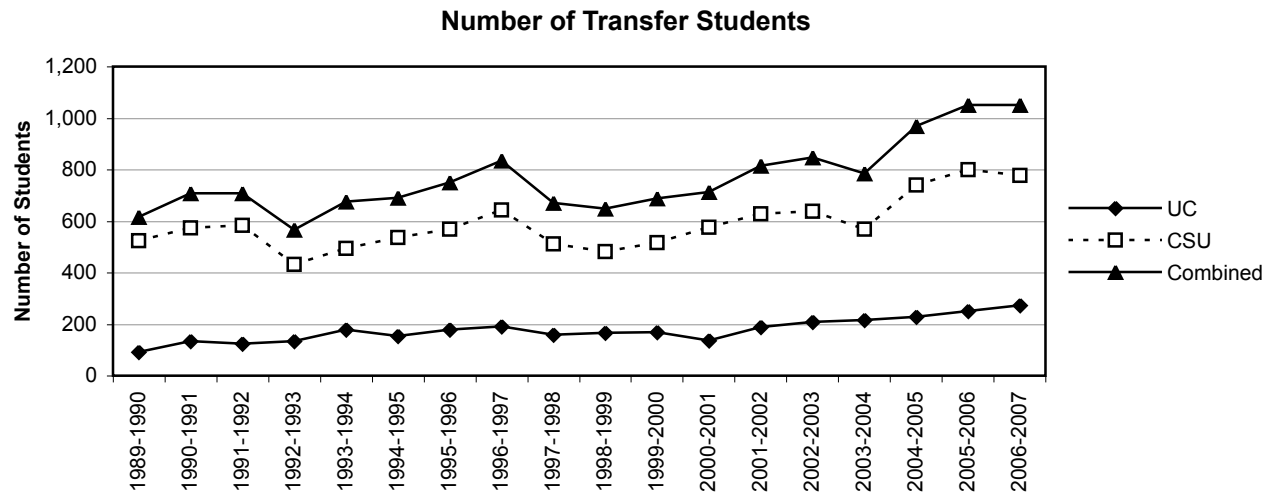
Status	Number of Students				Percent of Students			
	Fall 2004	Fall 2005	Fall 2006	Fall 2007	Fall 2004	Fall 2005	Fall 2006	Fall 2007
Int'l Students	554	545	556	543	3%	4%	4%	3%
Other Credit	15,458	14,862	15,032	16,017	97%	96%	96%	97%



8. Transfers to UC and CSU from GCC

Number of Transfer Students from GCC to UC and CSU

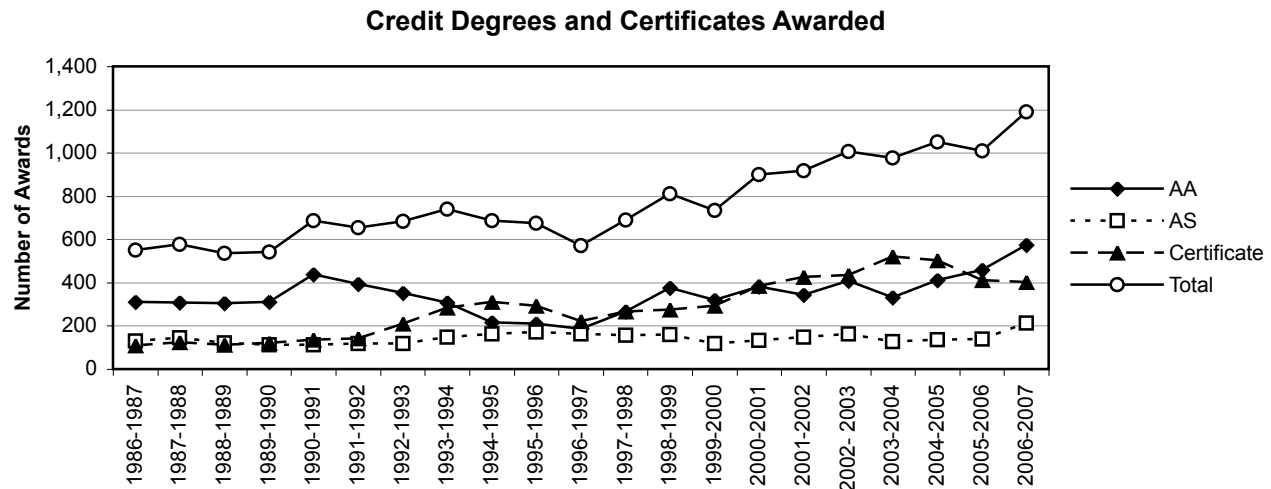
	1996-1997	1997-1998	1998-1999	1999-2000	2000-2001	2001-2002	2002-2003	2003-2004	2004-2005	2005-2006	2006-2007
UC	192	160	167	170	136	188	208	216	229	251	273
CSU	644	512	482	518	577	628	638	568	741	799	777
Total	836	672	649	688	713	816	846	784	970	1,050	1,050



9. Degrees and Certificates Awarded by GCC

Credit Degrees and Certificates Awarded

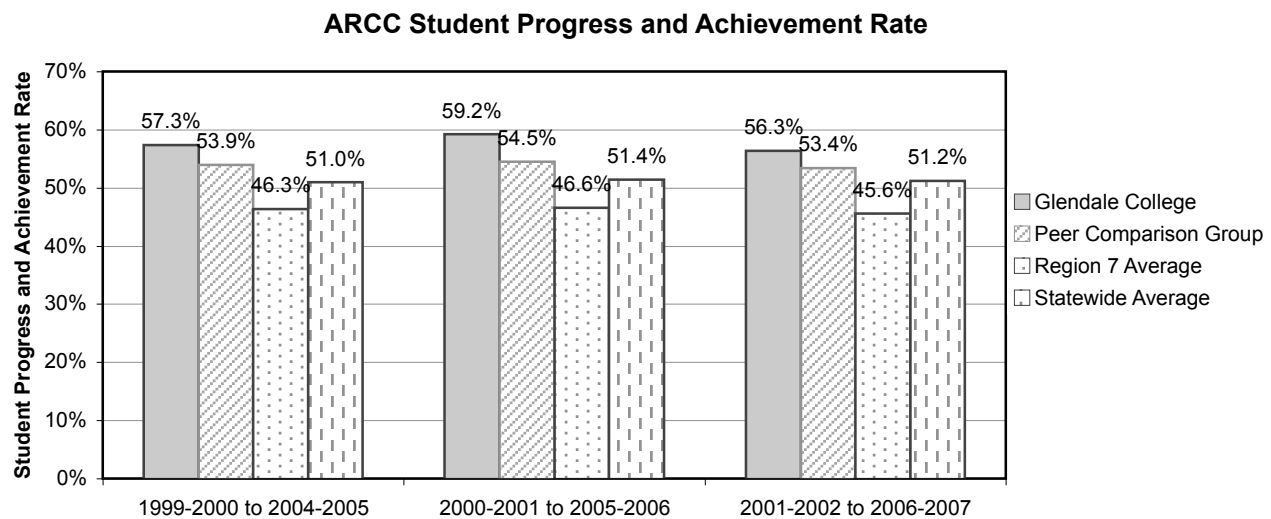
	1996-1997	1997-1998	1998-1999	1999-2000	2000-2001	2001-2002	2002-2003	2003-2004	2004-2005	2005-2006	2006-2007
AA	186	267	376	321	383	344	409	331	411	458	575
AS	163	158	161	119	133	149	162	126	136	140	212
Cert	222	265	274	294	385	425	435	520	503	411	402
Total	571	690	811	734	901	918	1,006	977	1,050	1,009	1,189



10. Student Progress and Achievement Rate (Accountability Measure)

One of the Accountability Reporting for the Community Colleges (ARCC) measures that the state calculates for all community colleges is Student Progress and Achievement Rate. This is the percentage of first-time students showing "intent to complete" who transferred; earned an AA, AS, or certificate; or achieved transfer directed or transfer prepared status within six years.

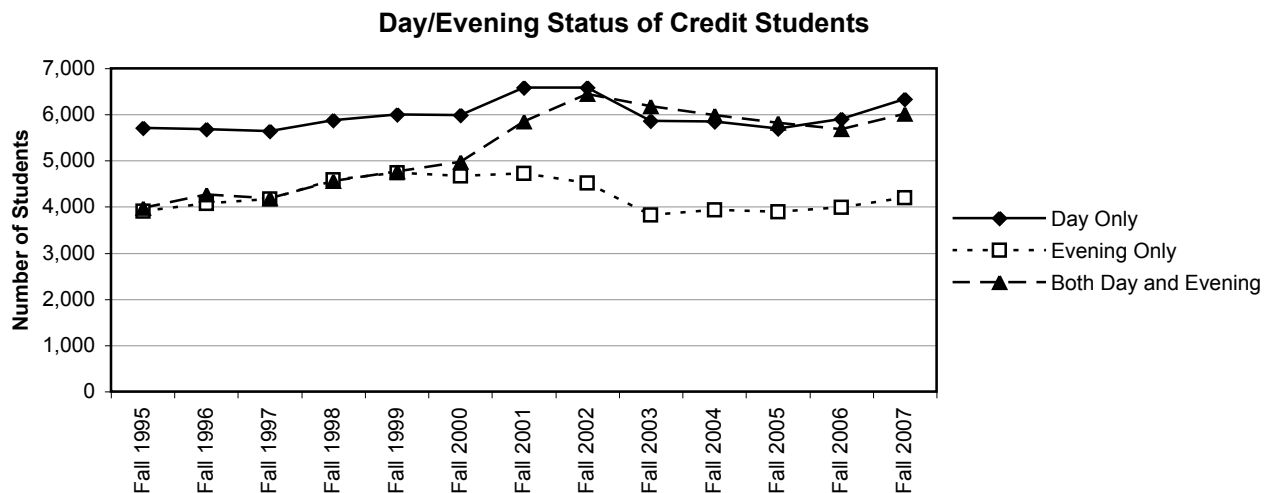
Student Progress and Achievement Rate	1999-2000 to 2004-2005	2000-2001 to 2005-2006	2001-2002 to 2006-2007
Glendale College	57.3%	59.2%	56.3%
Peer Comparison Group	53.9%	54.5%	53.4%
Region 7 Average	46.3%	46.6%	45.6%
Statewide Average	51.0%	51.4%	51.2%



11. Day and Evening Students

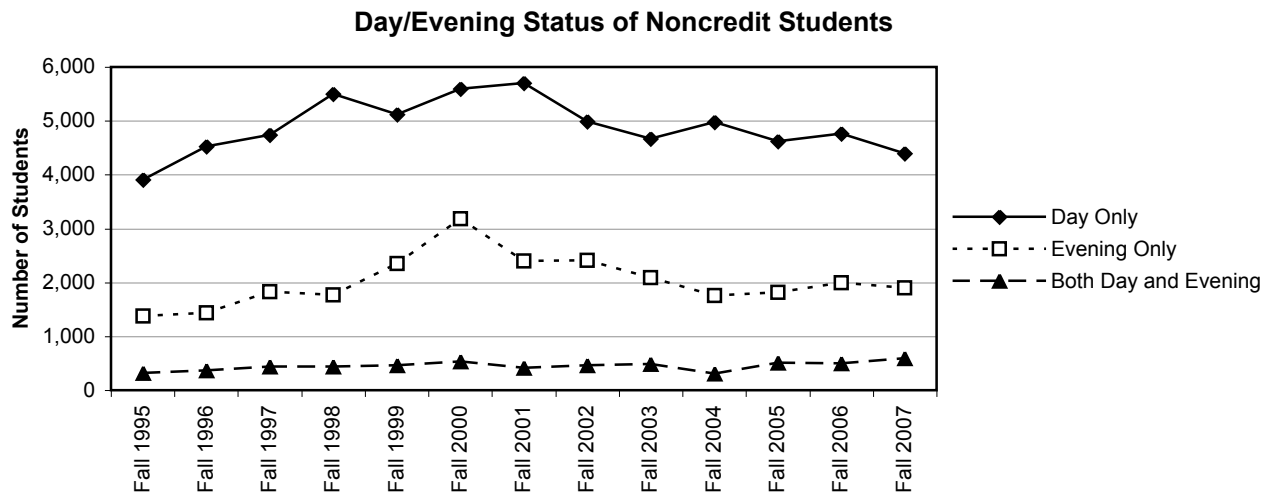
Day/Evening Status of Credit Students

Status	Number of Students				Percent of Students			
	Fall 2004	Fall 2005	Fall 2006	Fall 2007	Fall 2004	Fall 2005	Fall 2006	Fall 2007
Day Only	5,854	5,701	5,909	6,340	37%	37%	38%	38%
Evening Only	3,935	3,889	3,994	4,202	25%	25%	26%	25%
Both	5,995	5,817	5,685	6,018	38%	38%	36%	36%



Day/Evening Status of Noncredit Students

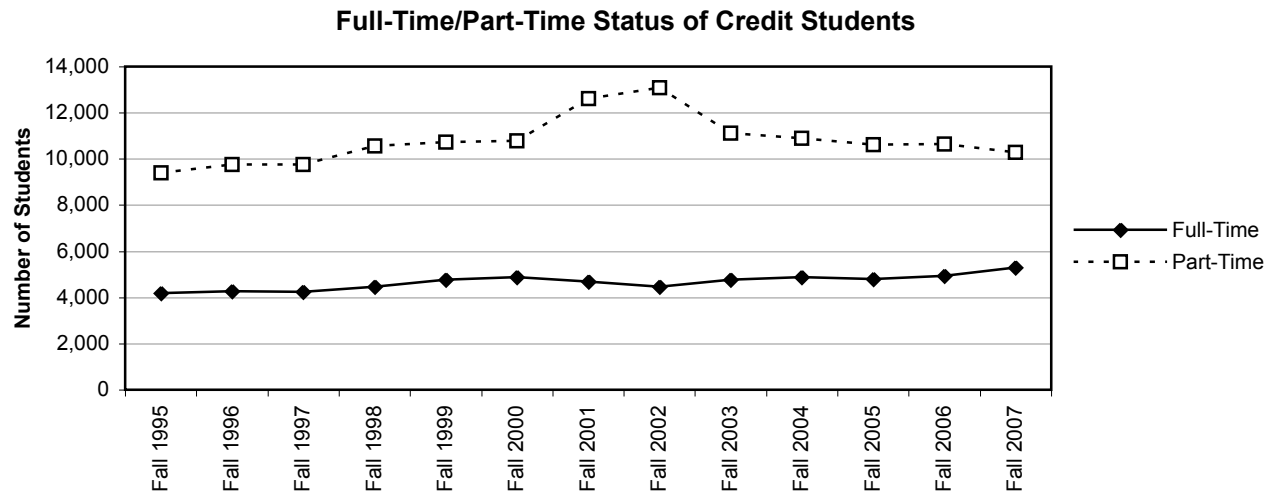
Status	Number of Students				Percent of Students			
	Fall 2004	Fall 2005	Fall 2006	Fall 2007	Fall 2004	Fall 2005	Fall 2006	Fall 2007
Day Only	4,979	4,621	4,768	4,400	71%	67%	66%	64%
Evening Only	1,760	1,814	2,000	1,901	25%	26%	28%	28%
Both	304	507	497	596	4%	7%	7%	9%



12. Full-Time/Part-Time Status

Full-Time/Part-Time Status of Credit Students

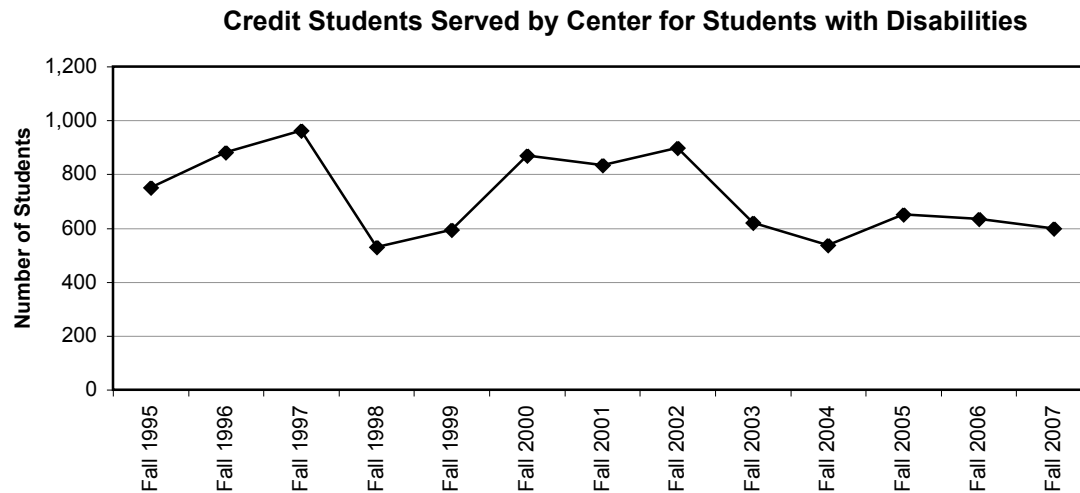
Status	Number of Students				Percent of Students			
	Fall 2004	Fall 2005	Fall 2006	Fall 2007	Fall 2004	Fall 2005	Fall 2006	Fall 2007
Full-Time	4,873	4,795	4,945	5,291	69%	69%	68%	77%
Part-Time	10,894	10,620	10,643	10,273	155%	153%	146%	149%



13. Disabled Students Served by CSD

Number of Disabled Students Served by CSD

Status	Number of Students				Percent of Students			
	Fall 2004	Fall 2005	Fall 2006	Fall 2007	Fall 2004	Fall 2005	Fall 2006	Fall 2007
Disabled	536	652	635	598	8%	9%	9%	9%

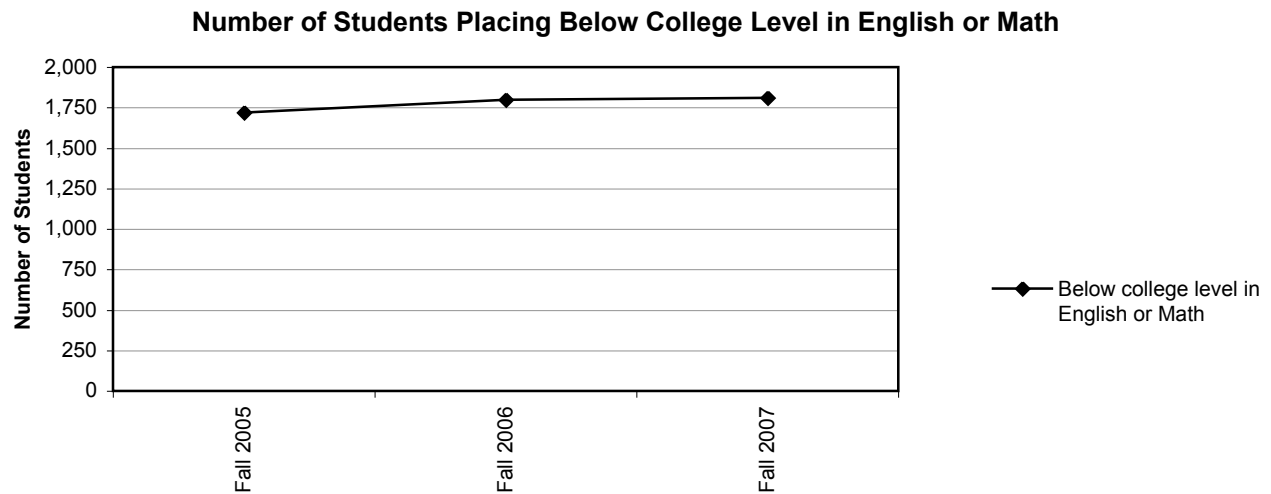


14. Students Placing into Basic Skills

Placement of First-Time College Students into English and Math

The table shows data for first-time college students with both English and Math placements during their first Fall semester. College level is defined as English 120 and Math 101.

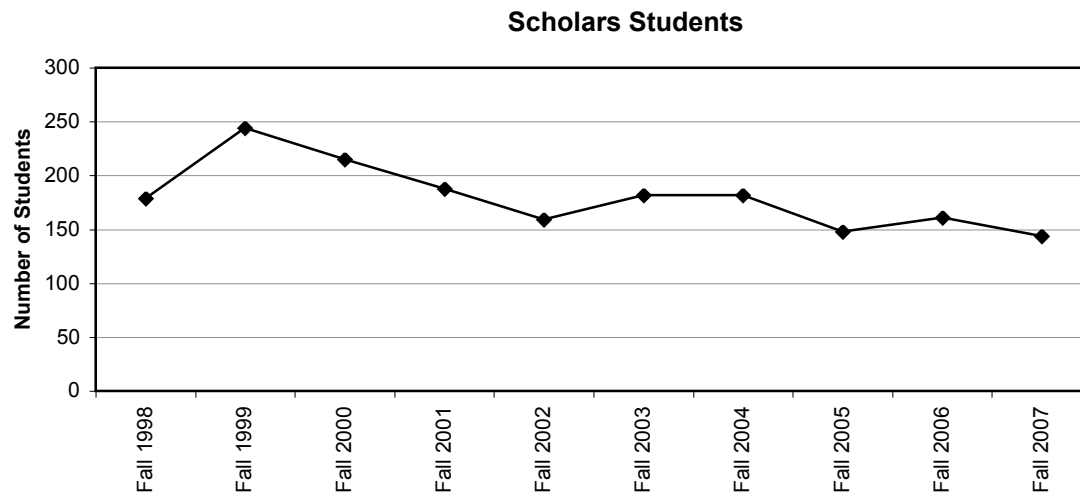
	Fall 2005	Fall 2006	Fall 2007	Fall 2005	Fall 2006	Fall 2007
College level English and Math	567	606	566	33%	34%	31%
College level English; lower Math	564	584	544	33%	32%	30%
College level Math; lower English	158	186	178	9%	10%	10%
Below college level English and Math	430	421	522	25%	23%	29%
Below college level in English or Math	1,719	1,797	1,810	100%	100%	100%



15. Scholars Students

Number of Scholars Students Registered for Credit Courses

Status	Number of Students				Percent of Students			
	Fall 2004	Fall 2005	Fall 2006	Fall 2007	Fall 2004	Fall 2005	Fall 2006	Fall 2007
Scholars	182	148	161	144	3%	2%	2%	2%



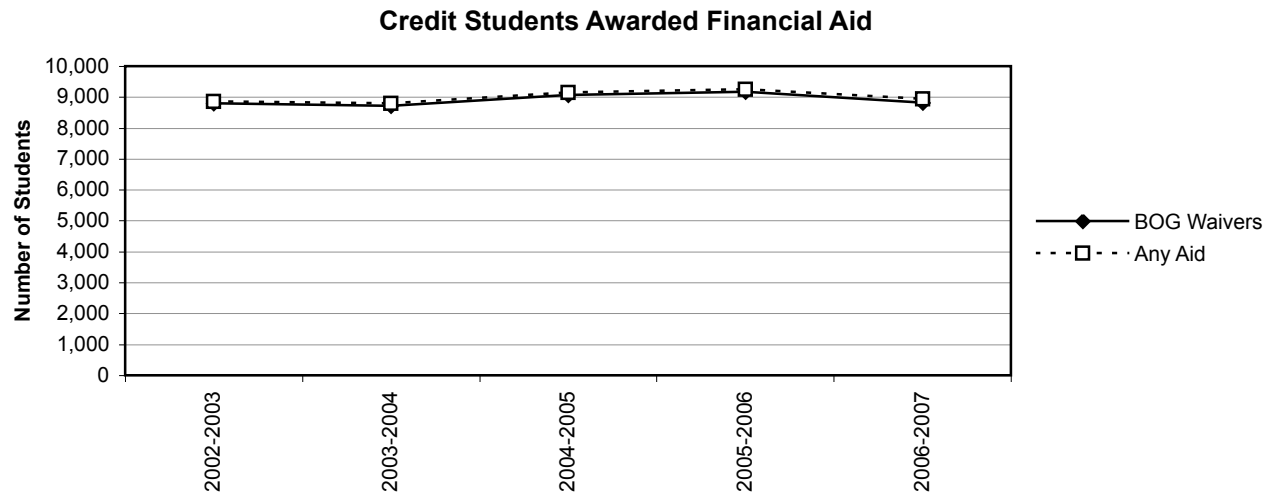
Note: Scholars students are identified by a flag in the Registration Flags database.

16. Credit Students Awarded Financial Aid

Number of Enrolled Credit Students Awarded Financial Aid

Status	Number of Students				Percent of Students			
	Fall 2003	Fall 2004	Fall 2005	Fall 2006	Fall 2003	Fall 2004	Fall 2005	Fall 2006
BOG Waiver	8,707	9,072	9,167	8,818	41%	43%	42%	40%
Any Aid	8,799	9,160	9,248	8,945	41%	43%	42%	41%
No Aid	12,659	12,180	12,561	13,115				

Source: GCC MIS Data Submissions



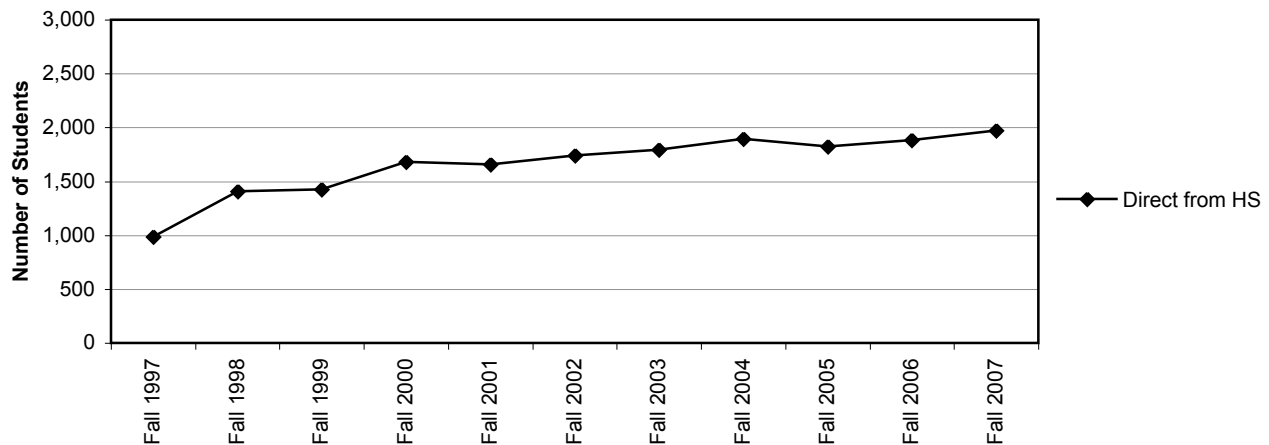
17. Credit Student High Schools

Students "directly from high school" are those who graduated high school in the same year as they attended GCC (e.g., a student graduating in 2007 who enrolled in credit classes at GCC in Fall 2007 is considered a student directly from high school).

Number of Credit Students Entering GCC Directly from High School

Status	Number of Students				Percent of Credit Students			
	Fall 2003	Fall 2004	Fall 2005	Fall 2006	Fall 2003	Fall 2004	Fall 2005	Fall 2006
Credit Students	15,784	15,414	15,593	16,560				
Direct from HS	1,895	1,826	1,881	1,970	12%	12%	12%	12%

Credit Students Entering GCC Directly from High School



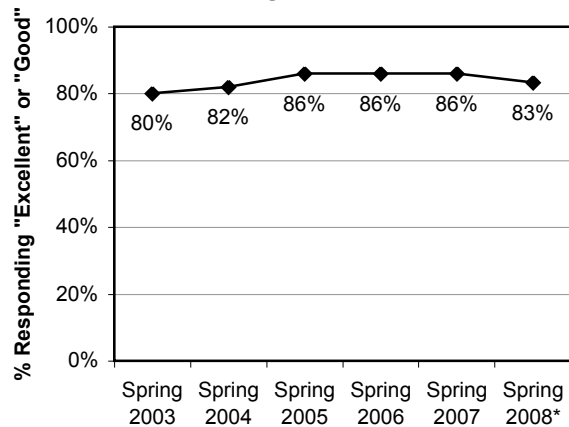
Number of Students from Major Feeder High Schools

School	Number of Students				% of Students Direct from HS			
	Fall 2003	Fall 2004	Fall 2005	Fall 2006	Fall 2003	Fall 2004	Fall 2005	Fall 2006
Glendale	321	290	312	291	17%	16%	17%	15%
Hoover	229	224	204	234	12%	12%	11%	12%
Crescenta Valley	119	130	160	155	6%	7%	9%	8%
Clark	111	88	75	109	6%	5%	4%	6%
Daily	21	11	15	22	1%	1%	1%	1%
Glendale USD	801	743	766	811	42%	41%	41%	41%
Burbank	134	98	135	153	7%	5%	7%	8%
Burroughs	55	31	40	48	3%	2%	2%	2%
Burbank USD	196	132	178	207	10%	7%	9%	11%
Marshall	77	71	69	104	4%	4%	4%	5%
Verdugo Hills	84	59	56	72	4%	3%	3%	4%
Eagle Rock	39	33	51	50	2%	2%	3%	3%
Los Angeles	14	16	41	23	1%	1%	2%	1%
Franklin	54	70	40	27	3%	4%	2%	1%
LAUSD	486	450	459	497	26%	25%	24%	25%
Alex Pilibos	10	11	17	12	1%	1%	1%	1%
Holy Family	7	5	15	2	0%	0%	1%	0%
Bellarmino-Jeff.	6	11	13	12	0%	1%	1%	1%
Providence	11	11	11	9	1%	1%	1%	0%
St. Francis	9	7	10	11	0%	0%	1%	1%
Privates	117	89	112	94	6%	5%	6%	5%

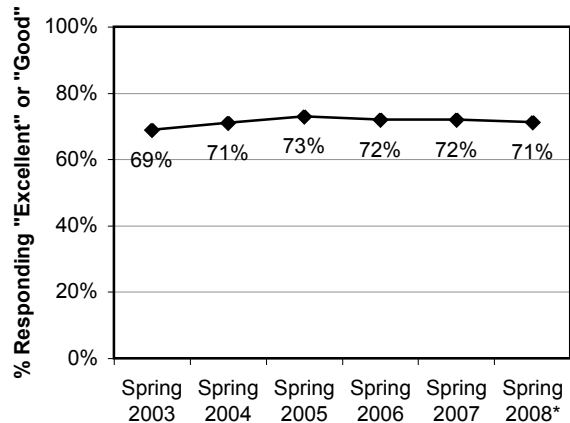
18. Students' Views of GCC

The Spring Student Survey asks a sample of students to evaluate aspects of their education at GCC. The following graphs show the percentage of students responding "Excellent" or "Good" to a selected set of items. Spring 2008 data are preliminary and based on the responses of 2,600 students.

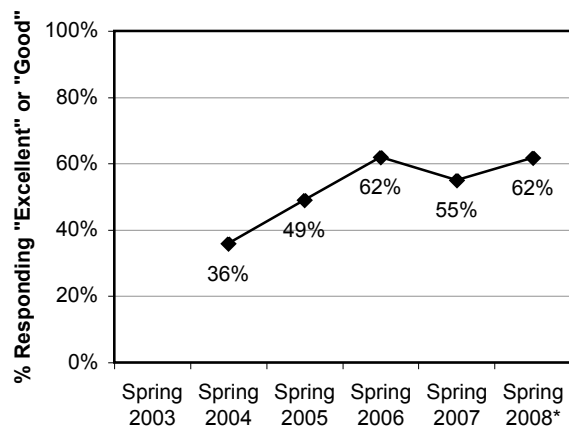
"The education you are getting at GCC"



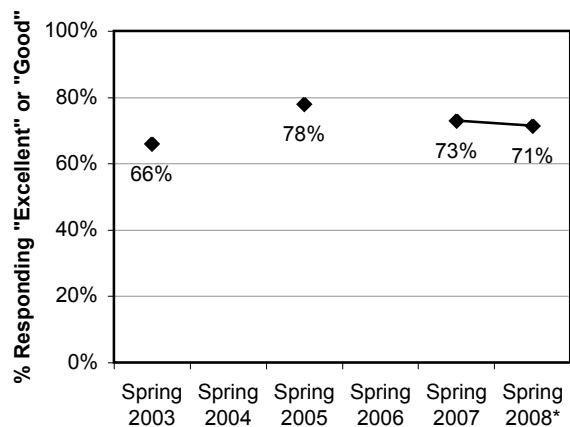
"Campus friendliness to students"



"Availability of classes at GCC"



"Overall quality of technology at GCC"



"Parking at GCC"

