



# **Community Profile**

## **2008**

Research & Planning  
Glendale Community College  
1500 North Verdugo Road  
Glendale, California 91208  
818.240.1000x5390  
<http://research.glendale.edu>



# Introduction

The Community Profile presents information about Glendale Community College's service area in order to help college stakeholders make informed decisions and plan effectively. This report looks at trends in three subject areas: population and demographics, employment and labor marker information, and K-12 education trends. The Community Profile serves as a companion piece to the Campus Profile, which presents facts about Glendale Community College students and is published annually by Research & Planning. In previous years, the Community Profile was the first part of the Campus Profile, but this year it has been separated into its own report.

The official boundaries of the Glendale Community District include the city of Glendale and a small unincorporated section of Los Angeles County northeast of the city boundaries. However, approximately 55% of credit students and 26% of noncredit students reside outside the Glendale Community College District. This report includes information about the larger service area as well as the city of Glendale.

Section 1 describes the population and demographics of GCC's service area. It includes population trends, projections, demographic information, and socioeconomic information.

Section 2 describes employment and labor market information, including unemployment rates and employment by industry.

Section 3 describes K-12 education trends in the local unified school districts. It includes enrollment data, projections of enrollments and high school graduation, and performance on the California High School Exit Examination.



# Section 1. Population and Demographics

Section 1 describes Glendale Community College's population at the city and county level, with comparisons to state and national totals.

## 1.1 Population Trends

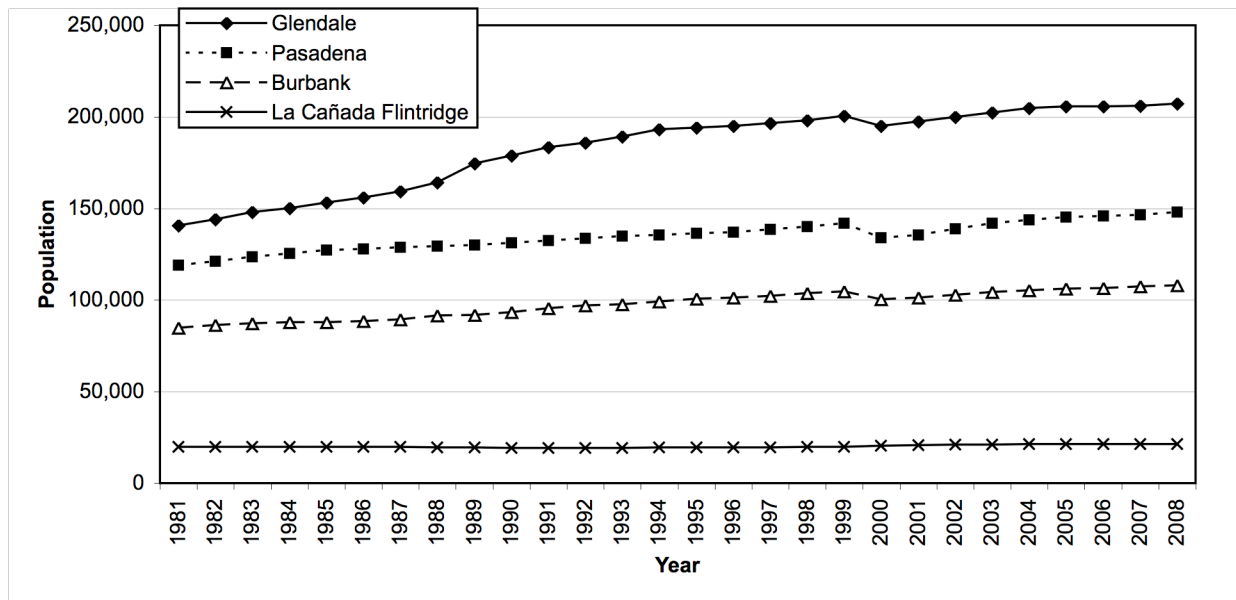
While California has grown 5% from 2004 to 2008, Glendale has grown only 1% in the same time period. Glendale's population is approximately 40% higher than Pasadena's, and nearly twice as high as Burbank's.

**Figure 1.1. Population Estimates, 2003-2007**

	2004	2005	2006	2007	2008	Change 2004 to 2008
<b>General Population Trends</b>						
United States	293,191,511	295,895,897	298,754,819	301,621,157	n/a	
California	36,199,342	36,675,346	37,114,598	37,559,440	38,049,462	+5%
L.A. County	10,077,865	10,163,097	10,223,263	10,275,914	10,363,850	+3%
<b>Population Trends in GCC Service Area</b>						
Glendale	204,844	205,746	205,876	206,007	207,157	+1%
Pasadena	143,658	145,285	145,834	146,452	148,126	+3%
Burbank	105,178	106,084	106,652	107,318	108,029	+3%
La Cañada Flintridge	21,367	21,475	21,266	21,233	21,276	+0%

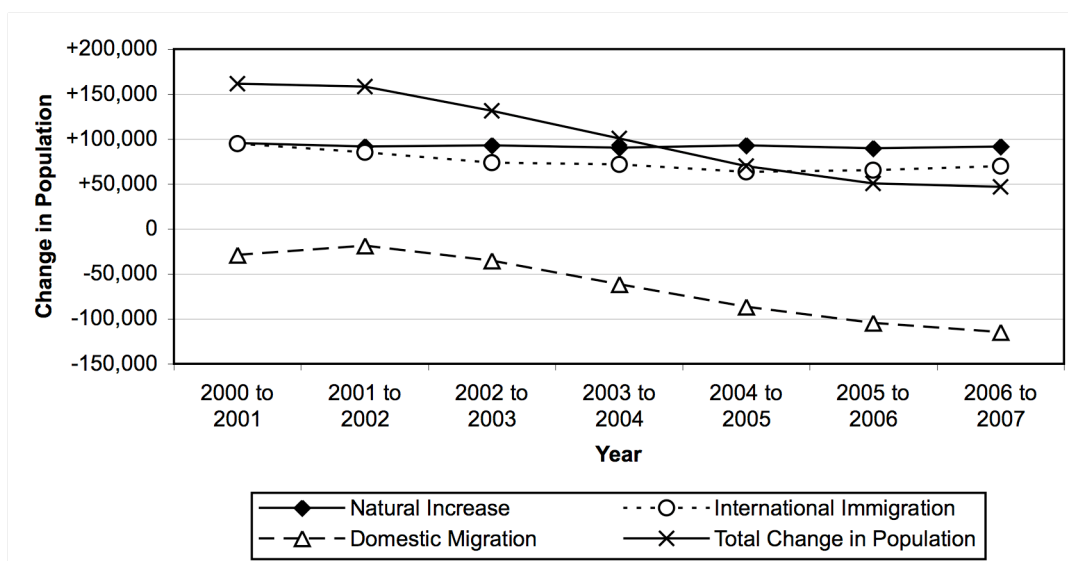
*Data Source: U.S. Census, California Department of Finance*

**Figure 1.2. Population Estimates, 1981-2008**



Although the population of Los Angeles County is still increasing, the rate of increase has slowed considerably since 2001. The graph below shows components of population change in Los Angeles County. "Natural increase" is the number of births minus the number of deaths; this has remained relatively steady over the past seven years, with births outnumbering deaths by approximately 100,000 every year. "International immigration" is the net number of people entering the county from other countries (the number entering minus the number leaving to other countries); this has declined from adding about 95,000 people every year to adding about 70,000 per year. "Domestic migration" is the net number of people entering the county from other parts of the United States (the number entering minus the number leaving). Domestic migration has been negative for many years, and the rate of losing people has increased sharply since 2001. Approximately 115,000 more people move from Los Angeles County to other parts of the United States than move from other parts of the United States to Los Angeles County.

**Figure 1.3. Components of Population Change in Los Angeles County, 2000-2007**



*Data Source: California Department of Finance*

From 2010 to 2020, California's population is projected to increase by 13%. However, the population of Los Angeles County is projected to increase by a smaller amount, 7%, which is closer to the national projection of a 9% increase. Future growth is expected to follow a similar pattern, with California projected to grow approximately 10% per decade through 2050 and Los Angeles County projected to grow approximately 6% per decade through 2050. Figure 1.4, on the next page, shows population projections from 2000 to 2050.

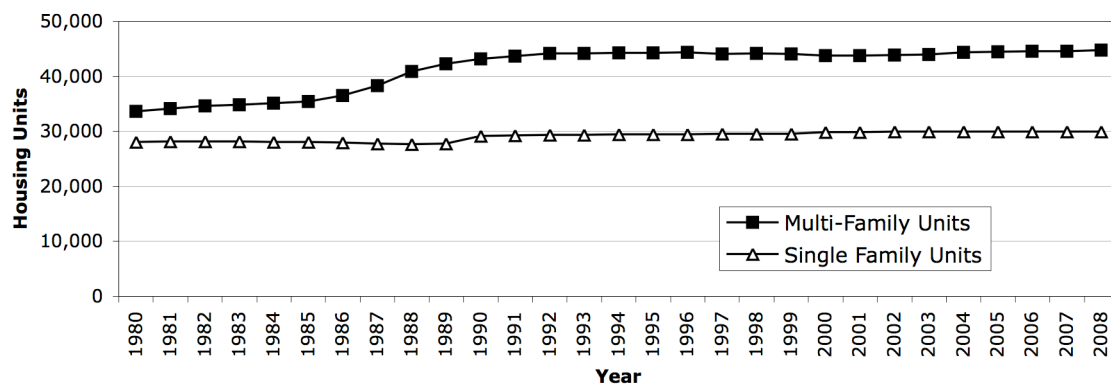
**Figure 1.4. Population Projections by Decade, 2000-2050**

	2000	2010	2020	2030	2040	2050
United States	282,125	308,936	335,805	363,584	391,946	419,854
California	34,105,437	39,135,676	44,135,23	49,240,891	54,226,115	59,507,876
L.A. County	9,578,960	10,514,663	11,214,237	11,920,289	12,491,606	13,061,787
	2000 to 2010	2010 to 2020	2020 to 2030	2030 to 2040	2040 to 2050	
United States	+10%	+9%	+8%	+8%	+7%	
California	+15%	+13%	+12%	+10%	+10%	
L.A. County	+10%	+7%	+6%	+5%	+5%	

*Data Source: U.S. Census, California Department of Finance*

In the late 1980's, housing in Glendale changed qualitatively. The number of multi-family housing units increased by 22%, while the number of single family housing units increased by only 4%. After 1990, the number of housing units in each category remained relatively steady.

**Figure 1.5. Housing Units Available in Glendale, 1980-2008**

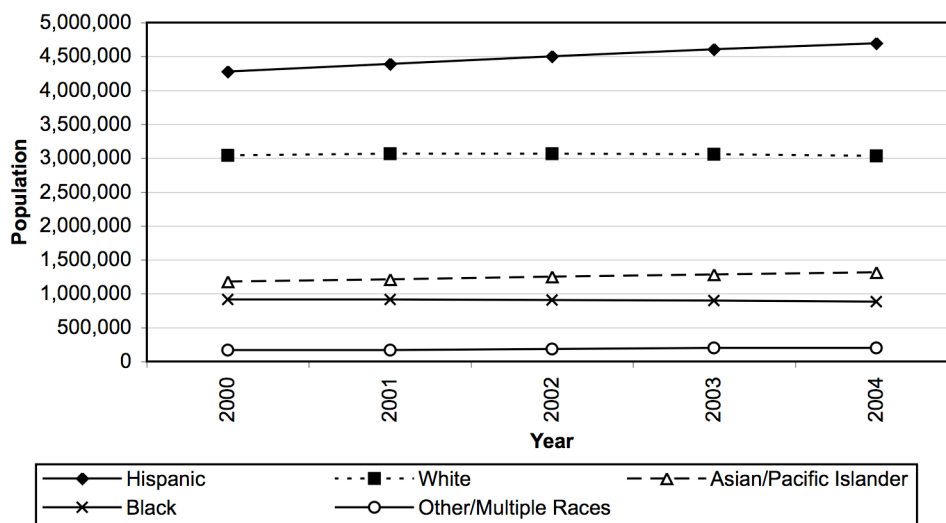


*Data Source: California Department of Finance*

## 1.2. Diversity

The graph below shows changes in ethnicity from 2000 to 2004, the most recent year for which estimates are available. Hispanics make up approximately 46% of the county population and non-Hispanic Whites make up 30% of the population.

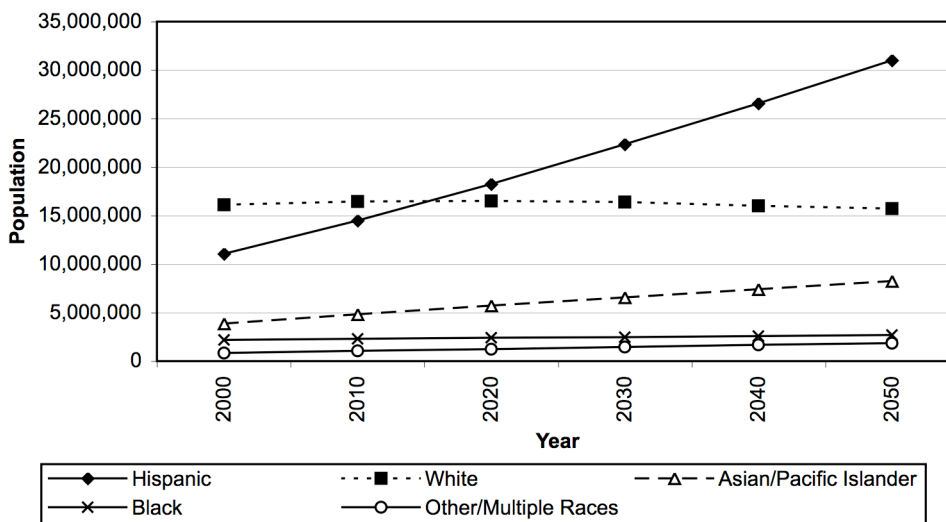
**Figure 1.6. Los Angeles County Population by Ethnicity, 2000-2004**



*Data Source: California Department of Finance*

According to state projections, both the number and percentage of Hispanic residents of California will increase dramatically through 2050. The following graph shows projected California population by ethnicity from 2000 through 2050. Hispanics are projected to make up 49% of the state's population in 2040 and 52% in 2050. The number of Asians and Pacific Islanders is projected to more than double from 2000 to 2050, while the number of Whites is projected to decline by about 3%.

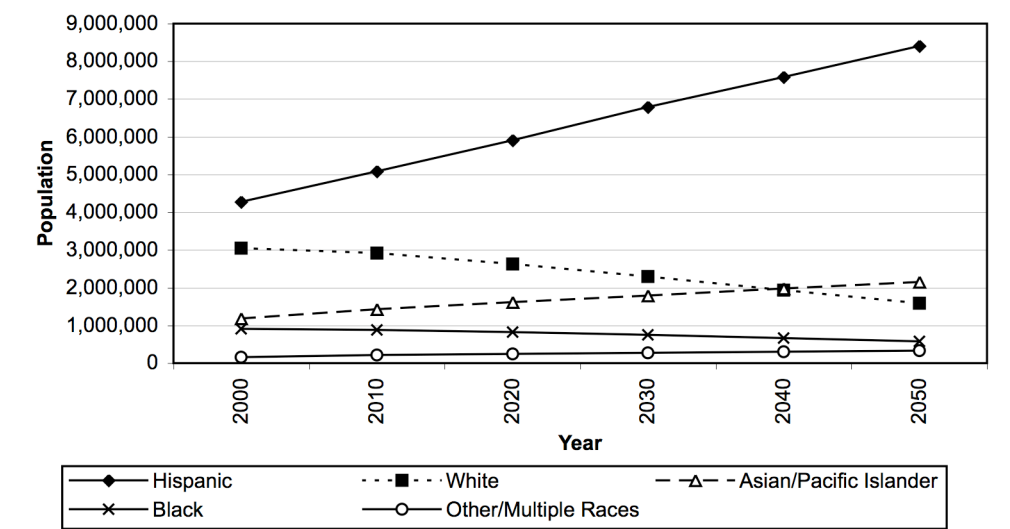
**Figure 1.7. California Population Projections by Ethnicity, 2000-2050**



*Data Source: California Department of Finance*

State projections show the Hispanic population of Los Angeles County growing more quickly than the state average. Hispanics are projected to make up 48% of Los Angeles County by 2010 and 53% in 2020. The number of Whites is projected to decline by about 14% between 2000 and 2020, and 48% between 2000 and 2050.

**Figure 1.8. Los Angeles County Population Projections by Ethnicity, 2000-2050**



*Data Source: California Department of Finance*

The table below shows the ethnic distribution of Glendale, Pasadena, and Burbank in 2006, according to the U.S. Census American Community Survey. Note that Glendale's diversity is camouflaged, as at least one-third of the Caucasian population of Glendale consists of immigrant Armenians.

**Figure 1.9. Glendale, Burbank, and Pasadena Ethnicity, 2006**

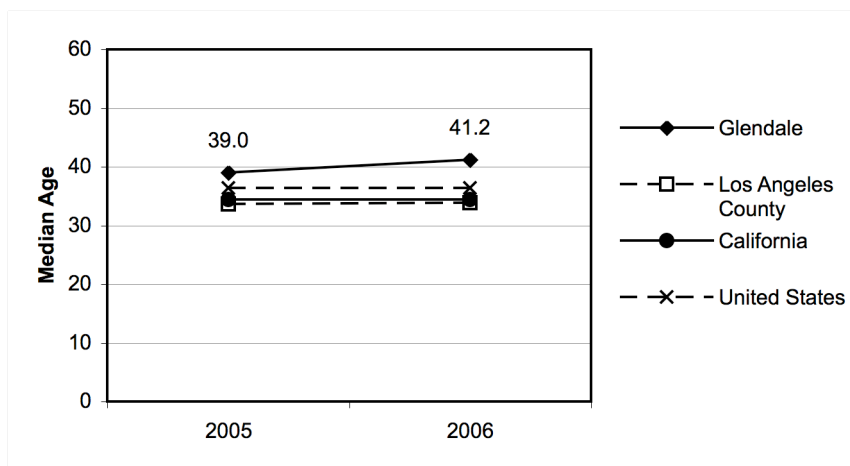
	White, Non- Hispanic	Hispanic	Black	Asian/Pacific Islander	Other/Multiple Races
<b>Number of Residents</b>					
Glendale	127,699	33,031	2,353	26,328	2,929
Pasadena	53,673	50,377	17,118	19,559	3,537
Burbank	68,835	24,653	3,041	8,817	2,302
<b>Percentage of Residents</b>					
Glendale	66%	17%	1%	14%	2%
Pasadena	37%	35%	12%	15%	2%
Burbank	64%	23%	3%	8%	2%

*Data Source: U.S. Census American Community Survey 2006*

The table and graph below show median age for Glendale, Los Angeles County, California, and the United States. Median age is the value for which half the population is younger and half is older. As the figures show, the median age of Glendale residents is older than that of residents of Los Angeles County, California, and the United States as a whole.

**Figure 1.10. Median Age**

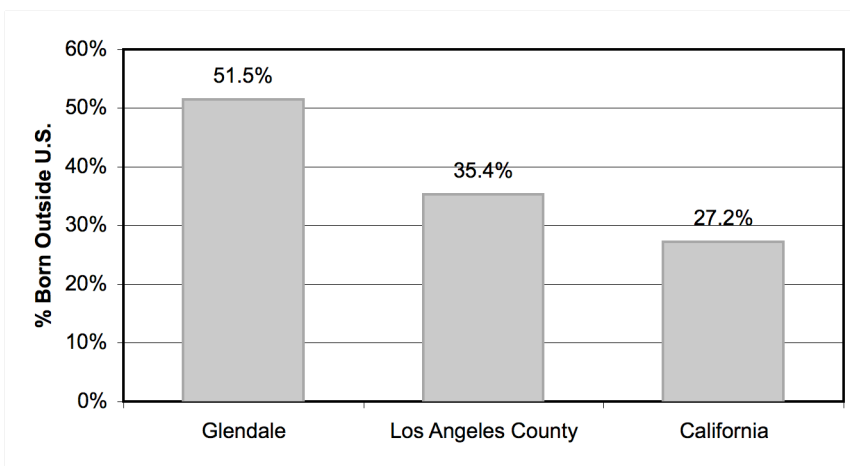
	2005	2006
Glendale	39.0	41.2
Los Angeles County	33.7	33.9
California	34.4	34.4
United States	36.4	36.4



*Data Source: U.S. Census American Community Survey 2005 and 2006*

The next graph shows the percentage of residents of Glendale, Los Angeles County, and California who were born outside the United States, according to the U.S. Census American Community Survey in 2006. Over half of Glendale's total population was born outside the U.S., compared to 35% in Los Angeles County and 27% in California as a whole.

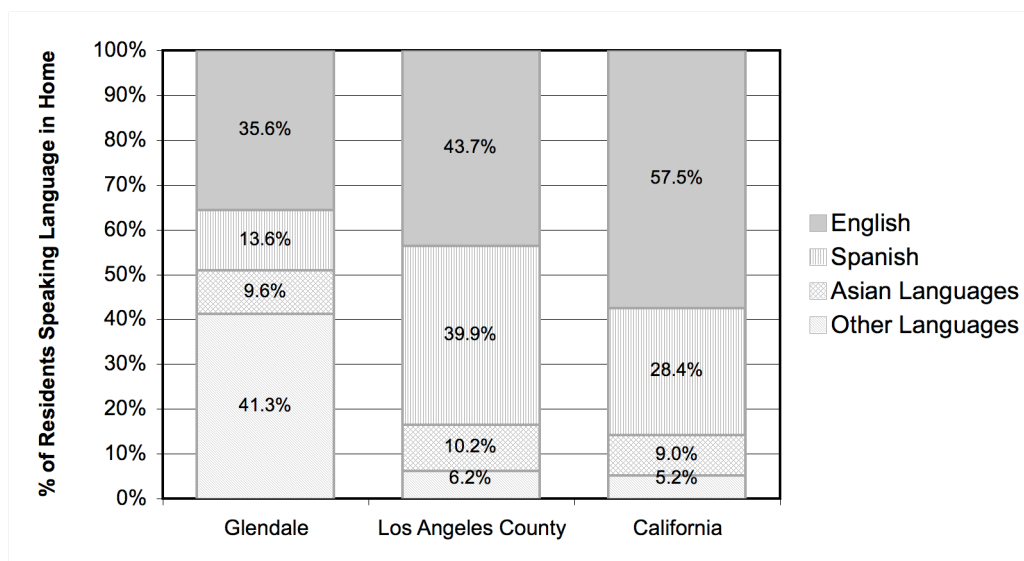
**Figure 1.11. Percentage of Residents Born Outside the United States**



*Data Source: U.S. Census American Community Survey 2006*

The graph below shows the percentage of residents over 5 years of age who speak a language other than English in the home. The percentage of residents speaking English only is smaller in Glendale than in Los Angeles County or California, as is the percentage speaking Spanish. The percentage speaking other languages (including Armenian and Farsi) is much higher in Glendale than in Los Angeles County or California as a whole. Note that the Asian languages category includes the languages of the Philippines.

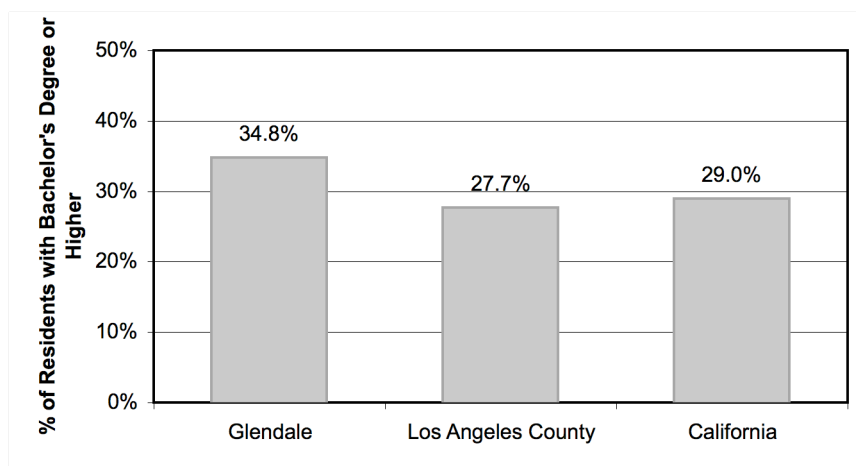
**Figure 1.12. Percentage of Residents by Language Spoken in the Home**



*Data Source: U.S. Census American Community Survey 2006*

The next graph shows the educational attainment of residents of Glendale, Los Angeles County, and California. Among residents age 25 and over, Glendale has a higher percentage of residents with a bachelor's degree or higher than Los Angeles County or California as a whole.

**Figure 1.13. Percentage of Residents with Bachelor's Degree or Higher**

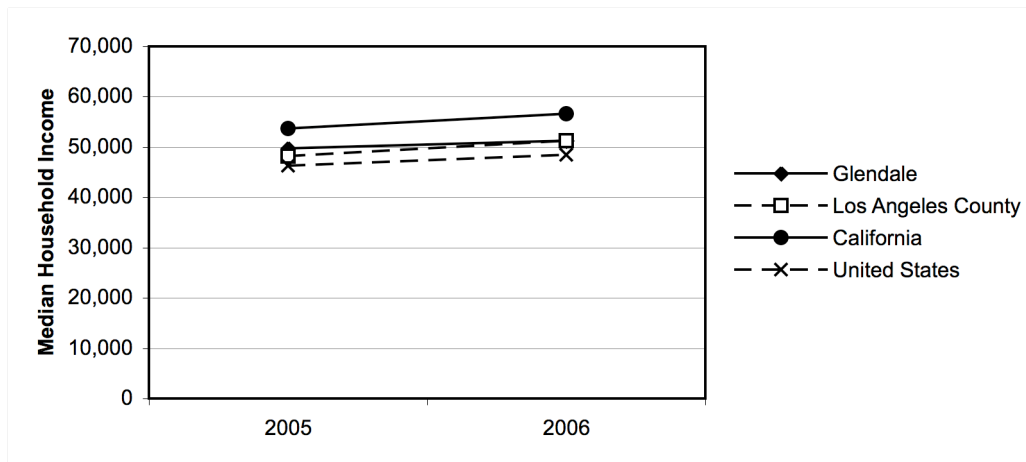


*Data Source: U.S. Census American Community Survey 2006*

### 1.3. Socioeconomic Information

The following graph shows median household income for Glendale, Los Angeles County, California, and the United States, according to the U.S. Census American Community Survey. While median household income rose by 6% in California and in Los Angeles County, it rose only 3% in Glendale (from \$49,750 to \$51,308). The median income in Glendale is very close to the median income in Los Angeles County, but it is about \$5,000 lower than the median income in California, a difference of about 8%.

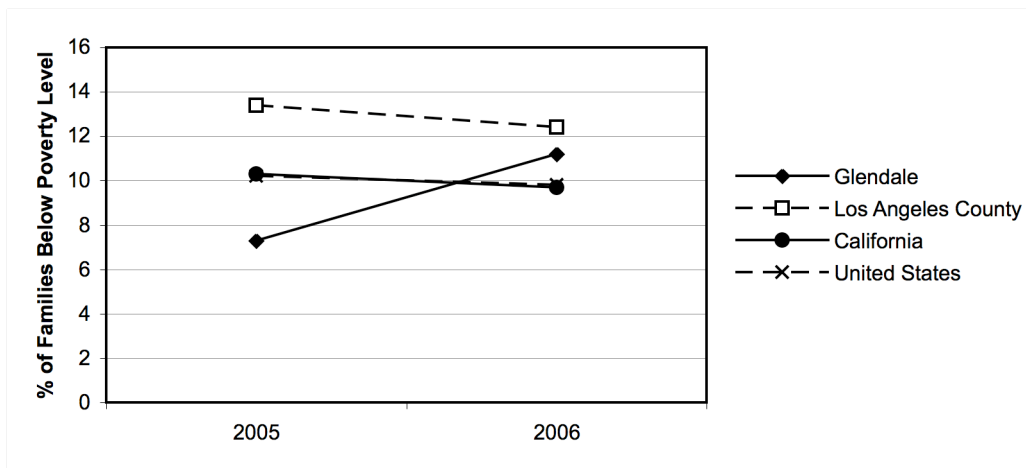
**Figure 1.14. Median Household Income**



*Data Source: U.S. Census American Community Survey 2005 and 2006*

The next graph shows the percentage of families in Glendale, Los Angeles County, California, and the United States whose income in the previous 12 months was below the poverty level. The percentage for Glendale increased from 7.3% to 11.2% between 2005 and 2006.

**Figure 1.15. Percentage of Families Below Poverty Level**



*Data Source: U.S. Census American Community Survey 2005 and 2006*

## Section 2. Employment and Labor Market Information

### 2.1. Employment and Unemployment

This section reports the civilian labor force, number employed, number unemployed, and unemployment rate for Los Angeles County and for GCC's service area. The rates reported are annual averages and are not seasonally adjusted.

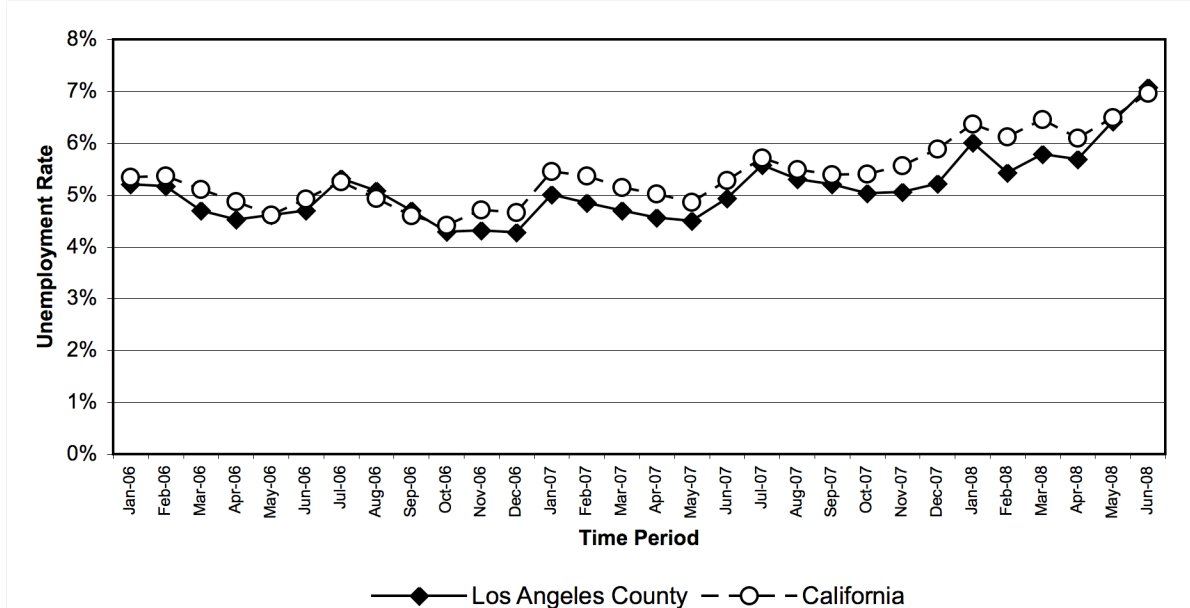
**Figure 2.1. Los Angeles County Employment and Unemployment, 2003-2007**

	2003	2004	2005	2006	2007
Civilian Labor Force	4,759,100	4,770,800	4,816,000	4,850,700	4,921,200
Employed	4,427,100	4,460,500	4,559,500	4,620,800	4,675,300
Unemployed	332,000	310,300	256,500	229,900	245,900
Unemployment Rate	7.0%	6.5%	5.3%	4.7%	5.0%

*Data Source: California Employment Development Department*

The graph below shows the monthly unemployment rate in Los Angeles County and statewide. The rates are not seasonally adjusted. They show an increasing trend since late 2006, with a relatively sharp increase in the first half of 2008.

**Figure 2.2. Monthly Unemployment Rate in Los Angeles County and Statewide, 2006-2008**



*Data Source: California Employment Development Department*

Complete data are not available for cities in Los Angeles County, but the following tables show unemployment rates in 2000, 2001, 2002, and 2007 for the Verdugo area (Glendale, Burbank, and La Cañada Flintridge) and the city of Glendale.

**Figure 2.3. Verdugo Consortium (Glendale, Burbank, La Cañada Flintridge) Employment and Unemployment, 2003-2007**

	2000	2001	2002		2007
Civilian Labor Force	172,300	172,300	172,300		177,600
Employed	163,200	163,200	163,200		170,400
Unemployed	9,100	9,100	9,100		7,200
Unemployment Rate	5.3%	5.3%	5.3%		4.1%

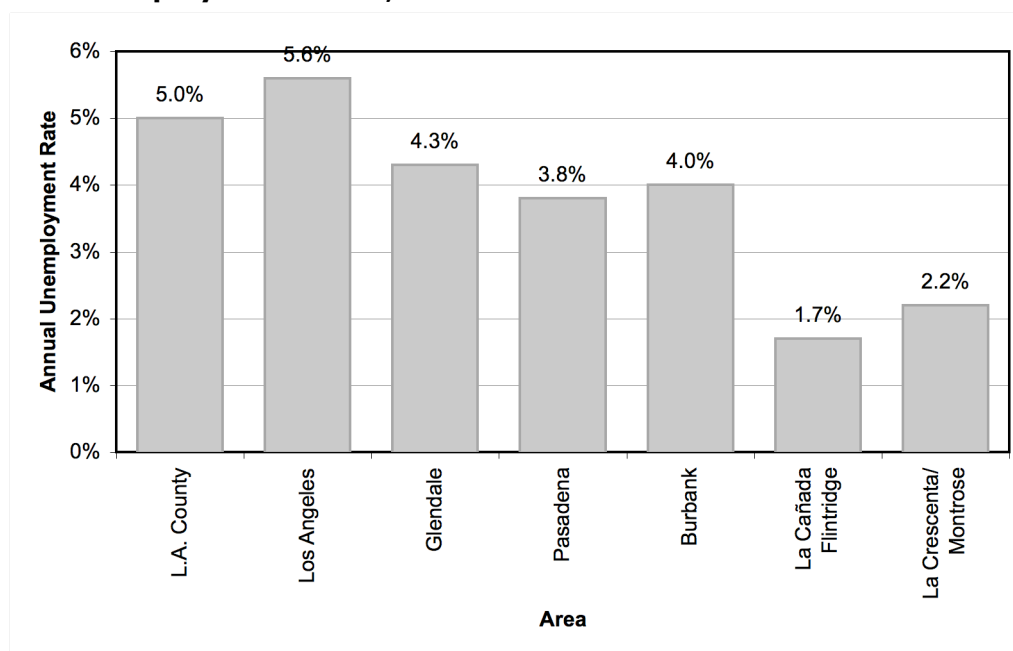
*Data Source: California Employment Development Department*

**Figure 2.4. Glendale Employment and Unemployment, 2003-2007**

	2000	2001	2002		2007
Civilian Labor Force	100,400	102,000	102,200		105,800
Employed	95,700	97,000	96,200		101,200
Unemployed	4,700	5,000	6,000		4,600
Unemployment Rate	4.7%	4.9%	5.9%		4.3%

*Data Source: California Employment Development Department*

**Figure 2.5. Unemployment Rates, 2007**



*Data Source: California Employment Development Department*

## 2.2. Employment by Industry and Occupation

The following table shows employment by industry in Los Angeles County in 2006 and 2007, sorted in decreasing order of number of jobs.

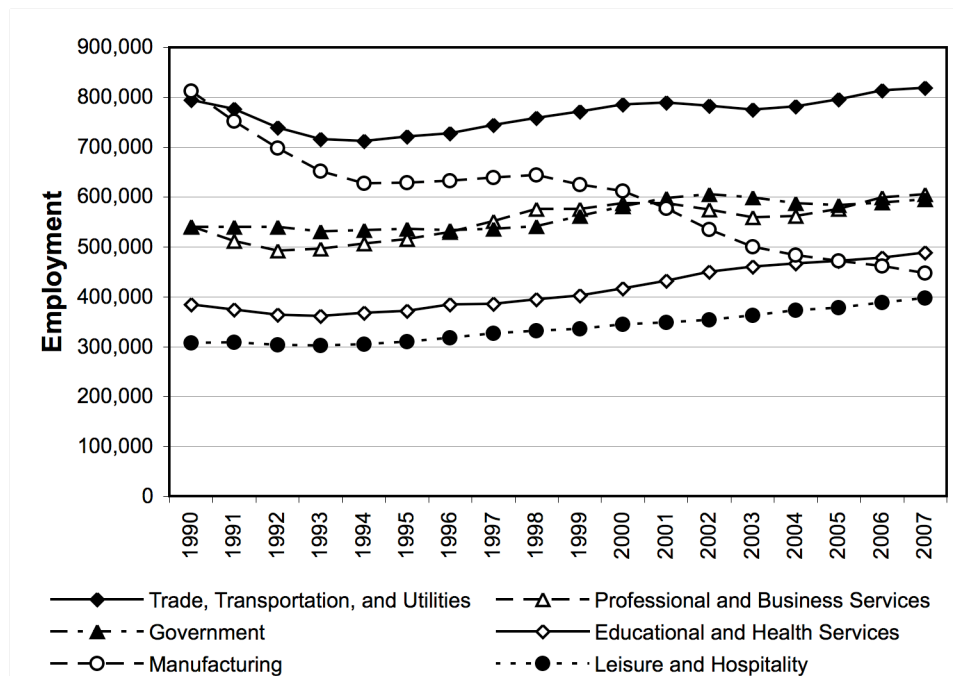
**Figure 2.6. Employment by Industry in Los Angeles County, 2006-2007**

Industry	2006	2007	Change in Jobs	Percent Change
Trade, Transportation, and Utilities	814,100	819,600	+5,500	+1%
Professional and Business Services	598,900	605,700	+6,800	+1%
Government	589,400	594,800	+5,400	+1%
Educational and Health Services	478,700	488,300	+9,600	+2%
Manufacturing	461,700	447,100	-14,600	-3%
Leisure and Hospitality	388,600	397,400	+8,800	+2%
Financial Activities	248,800	245,000	-3,800	-2%
Information	205,600	209,200	+3,600	+2%
Construction	157,500	157,200	-300	+0%
Other Services	145,200	147,100	+1,900	+1%
Natural Resources and Mining	4,000	4,400	+400	+10%

*Data Source: California Employment Development Department*

The graph below shows employment trends by industry. In Los Angeles County, employment in every industry except manufacturing has increased since the early 1990s.

**Figure 2.7. Employment Trends by Industry in Los Angeles County, 1990-2007**



*Data Source: California Employment Development Department*

The table below shows high-demand occupations requiring some postsecondary vocational education, generally a certificate or some coursework but not necessarily a two-year degree. The 10 occupations with the most projected new jobs in Los Angeles County between 2004 and 2014 are shown.

**Figure 2.8. Top 10 Occupations with Most Projected New Jobs in Los Angeles County, 2004-2014: Occupations Requiring Postsecondary Vocational Education**

	2004	2014	Average Annual Change	Percent Change, 2004 to 2014
Preschool Teachers, Except Special Education	11,850	15,310	+346	+29%
Licensed Practical and Licensed Vocational Nurses	16,460	18,930	+247	+15%
Automotive Service Technicians and Mechanics	19,840	22,030	+219	+11%
Medical Secretaries	14,100	16,110	+201	+14%
Legal Secretaries	12,570	14,090	+152	+12%
Massage Therapists	6,430	7,500	+107	+17%
Hairdressers, Hairstylists, and Cosmetologists	9,030	10,090	+106	+12%
Surgical Technologists	3,330	4,340	+101	+30%
Chefs and Head Cooks	3,680	4,620	+94	+26%
Emergency Medical Technicians and Paramedics	2,670	3,590	+92	+35%

*Data Source: California Employment Development Department*

The next table shows high-demand occupations requiring associate degrees.

**Figure 2.9. Top 10 Occupations with Most Projected New Jobs in Los Angeles County, 2004-2014: Occupations Requiring AA Degree**

	2004	2014	Average Annual Change	Percent Change, 2004 to 2014
Registered Nurses	65,620	82,130	+1,651	+25%
Dental Hygienists	4,650	6,790	+214	+46%
Paralegals and Legal Assistants	8,500	10,610	+211	+25%
Computer Support Specialists	14,140	15,580	+144	+10%
Medical Records and Health Information Technicians	4,300	5,520	+122	+28%
Radiologic Technologists and Technicians	4,400	5,430	+103	+23%
Respiratory Therapists	3,100	3,920	+82	+27%
Medical and Clinical Laboratory Technicians	3,460	4,100	+64	+19%
Computer Specialists, All Other	3,910	4,500	+59	+15%
Veterinary Technologists and Technicians	1,450	1,820	+37	+26%

*Data Source: California Employment Development Department*

The next table shows high-demand occupations requiring bachelor's degrees.

**Figure 2.10. Top 10 Occupations with Most Projected New Jobs in Los Angeles County, 2004-2014: Occupations Requiring Bachelor's Degree**

	<b>2004</b>	<b>2014</b>	<b>Average Annual Change</b>	<b>Percent Change, 2004 to 2014</b>
Elementary School Teachers, Except Special Education	53,140	63,870	+1,073	+20%
Business Operations Specialists, All Other	36,730	45,470	+874	+24%
Accountants and Auditors	40,580	46,800	+622	+15%
Secondary School Teachers, Except Special and Vocational Education	33,350	39,280	+593	+18%
Teachers and Instructors, All Other	22,400	26,860	+446	+20%
Computer Software Engineers, Applications	17,610	21,460	+385	+22%
Property, Real Estate, and Community Association Managers	25,940	29,370	+343	+13%
Special Education Teachers, Preschool, Kindergarten, and Elementary School	8,730	11,500	+277	+32%
Network Systems and Data Communications Analysts	5,850	8,520	+267	+46%
Computer Systems Analysts	13,220	15,840	+262	+20%

*Data Source: California Employment Development Department*



## Section 3. K-12 Education Trends

### 3.1. Public School Enrollment

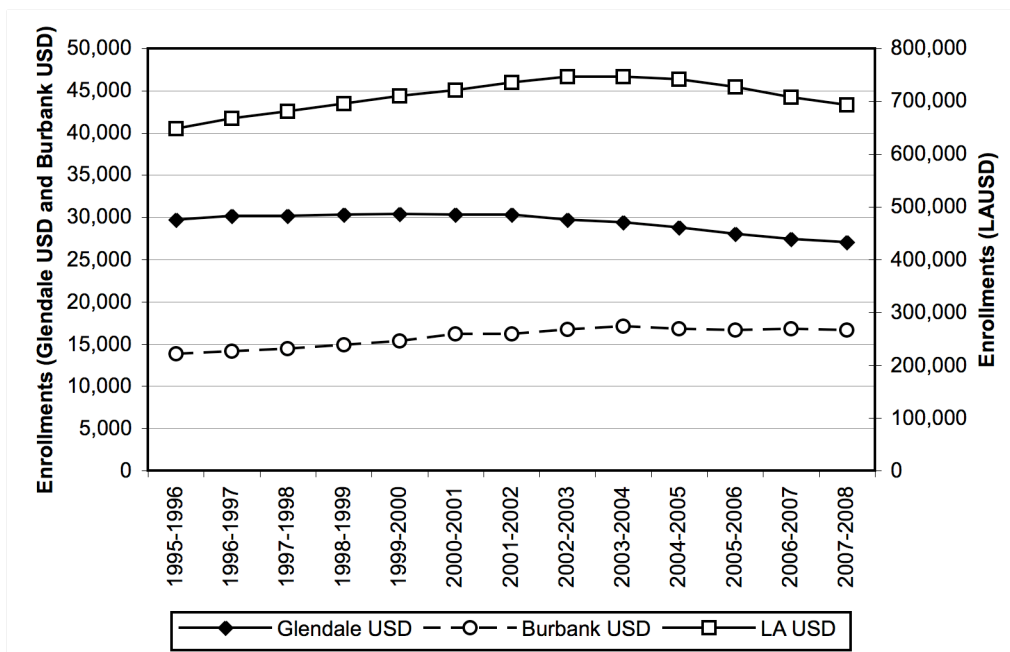
The table below shows enrollment trends in public K-12 schools from 2003-2004. Enrollment in public schools has declined by 5% in Los Angeles County between 2003-2004 and 2007-2008.

**Figure 3.1. Public School Enrollment, 2003-2008**

	2003- 2004	2004- 2005	2005- 2006	2006- 2007	2007- 2008	Change 03-04 to 07-08
<b>Public School Enrollment Trends</b>						
California	6,298,783	6,322,141	6,312,436	6,286,943	6,276,486	0%
L.A. County	1,742,873	1,734,125	1,708,064	1,673,257	1,648,564	-5%
<b>Public School Enrollment Trends in GCC Service Area (All Grades K-12)</b>						
Glendale Unified District	29,433	28,816	28,002	27,420	27,057	-8%
Burbank Unified District	17,066	16,783	16,648	16,784	16,654	-2%
L.A. Unified District	747,009	741,367	727,319	707,626	693,597	-7%
<b>High School Enrollments</b>						
Glendale	3,257	3,239	3,204	3,169	3,125	-4%
Hoover	2,670	2,568	2,423	2,401	2,279	-15%
Crescenta Valley	2,812	2,916	2,905	3,003	2,993	+6%
Clark Magnet	1,064	1,073	1,078	1,074	1,066	0%
Daily	258	242	249	235	333	+29%
Burbank	2,521	2,603	2,671	2,500	2,667	+7%
Burroughs	2,480	2,656	2,728	2,352	2,751	+17%
Marshall	4,834	4,760	4,561	4,550	4,404	-3%
Eagle Rock	3,032	3,021	3,023	2,952	3,066	4%
Verdugo Hills	2,405	2,383	2,344	2,402	2,341	-3%
Los Angeles	4,953	4,661	4,405	4,876	3,376	-31%
Belmont	5,213	5,336	4,359	5,299	4,200	-21%

*Data Source: California Department of Education*

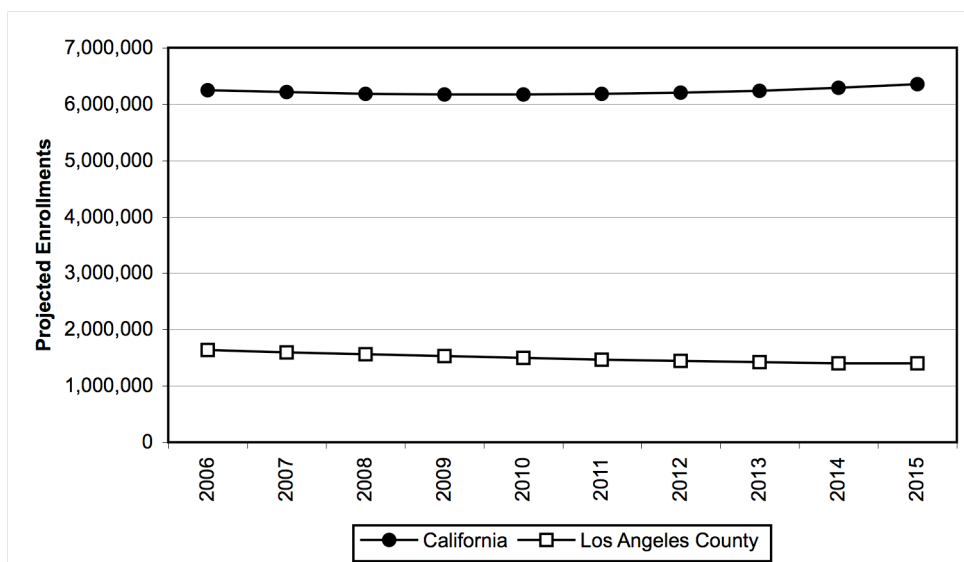
**Figure 3.2. Public School Enrollments in Glendale, Burbank, and Los Angeles Unified Districts, 1995-1996 to 2006-2007**



Data Source: California Department of Education

The following graph shows enrollment projections for California and for Los Angeles County from 2007 to 2016. California enrollments are projected to increase by 2% during this time period, while Los Angeles County public school enrollments are projected to decline by 15%.

**Figure 3.3. Public School Enrollment Projections for California and Los Angeles County, 2007-2016**



Data Source: California Department of Finance

## 3.2. High School Graduates

The table below shows the number of high school graduates for area feeder high schools.

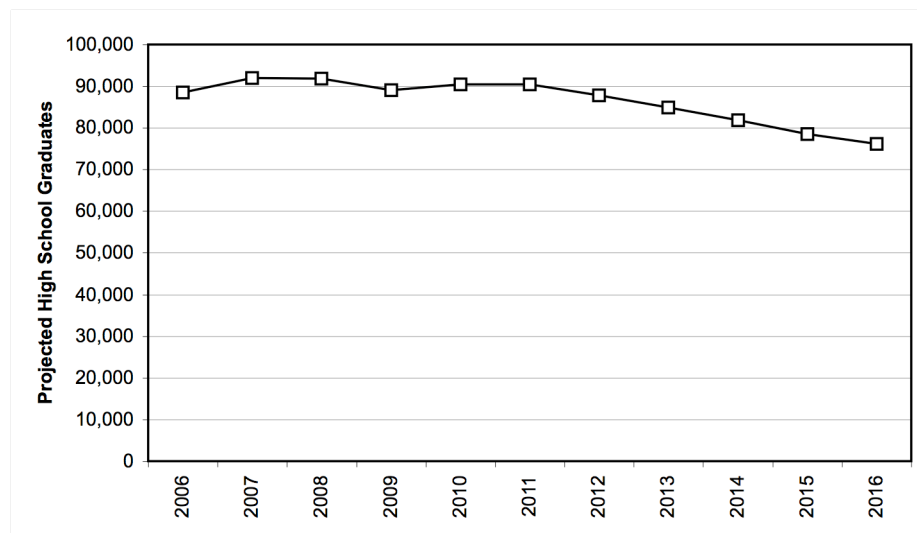
**Figure 3.4. Public School Graduates by District and School, 2002-2007**

	2002-2003	2003-2004	2004-2005	2005-2006	2006-2007	Change 02-03 to 06-07
Glendale Unified District	2,069	2,097	2,133	1,996	2,088	+1%
Burbank Unified District	1,232	1,238	1,202	1,117	1,333	+8%
L.A. Unified District	27,795	29,085	29,741	28,444	28,362	+2%
Glendale	642	719	655	634	591	-18%
Hoover	484	510	555	505	455	-11%
Crescenta Valley	533	524	563	628	673	+28%
Clark Magnet	248	231	241	226	239	+3%
Daily	68	52	66	54	84	+62%
Burbank	452	537	499	478	539	0%
Burroughs	420	422	458	448	542	+28%
Marshall	709	856	767	722	755	-12%
Eagle Rock	365	402	364	421	409	+2%
Verdugo Hills	323	326	413	348	427	+31%
Los Angeles	604	455	509	600	551	+21%
Belmont	726	639	733	672	342	-46%

*Data Source: California Department of Education*

The following graph shows California Department of Finance projections of the number of high school graduates in Los Angeles County between 2006 and 2016. The number of graduates is projected to decline by 17%.

**Figure 3.5. Projected Number of High School Graduates in Los Angeles County, 2006-2016**



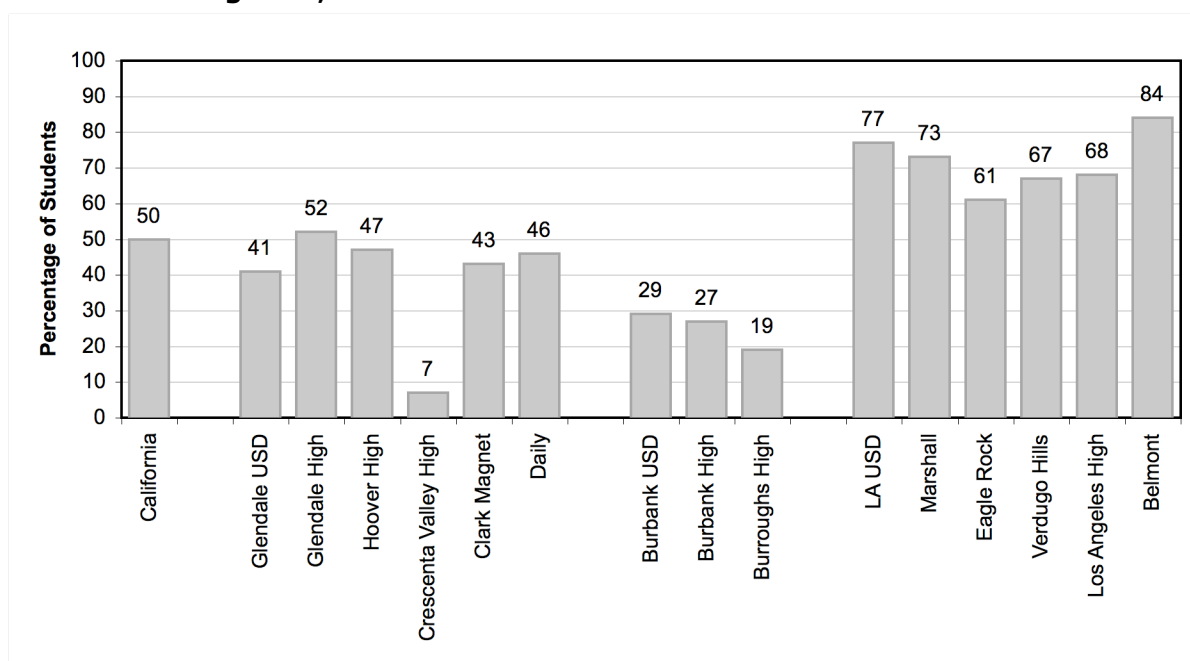
*Data Source: California Department of Finance*

### 3.3. Characteristics of Area Districts and High Schools

The following graphs show characteristics of public school districts and high schools that feed into Glendale Community College. The characteristics reported here show differences in the socioeconomic statuses of students and families from different districts and schools.

The graph below shows the percentage of students participating in free or reduced-price lunch programs. The state average is 50%. Both the Glendale Unified School District and the Burbank Unified School District have averages below the state average (41% and 29%, respectively) but the Los Angeles Unified School District average is much higher than the state average at 77%.

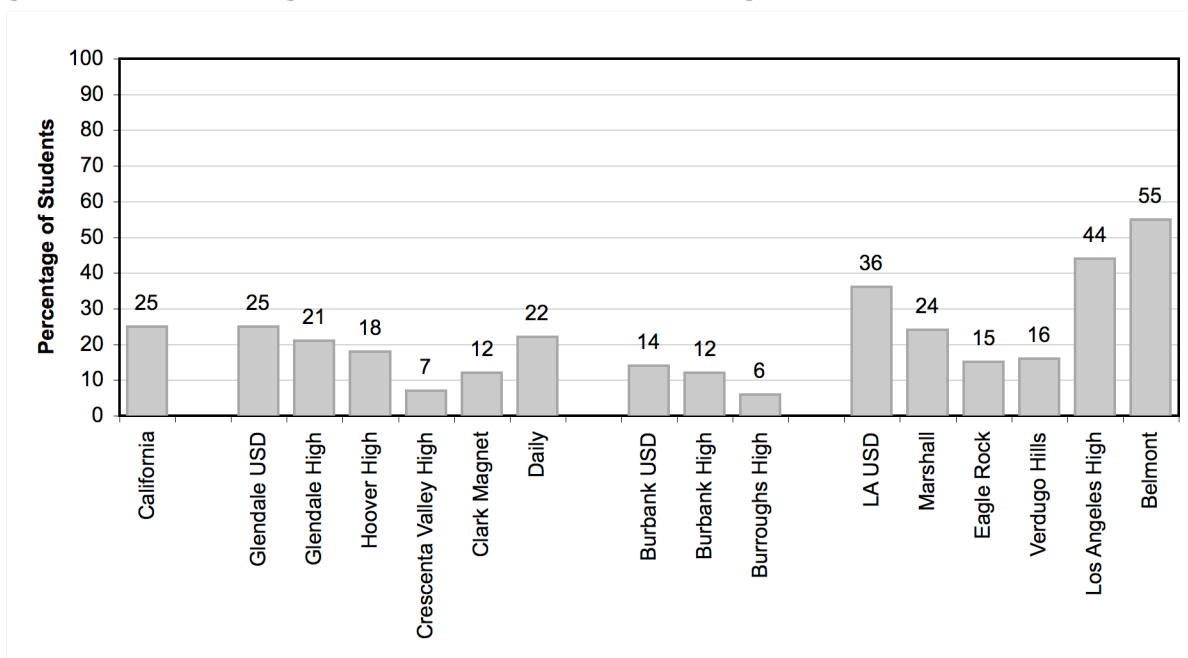
**Figure 3.6. Percentage of Students Participating in Free or Reduced-Price Lunch Programs, 2007**



*Data Source: California Department of Education*

The next graph (on the next page) shows the percentage of K-12 students classified as English Learners by school. The average across California is 25%, and the Glendale district matches this average. The Los Angeles district has a higher percentage of English Learners (36%), but for some schools, such as Belmont, the percentage is above 50%.

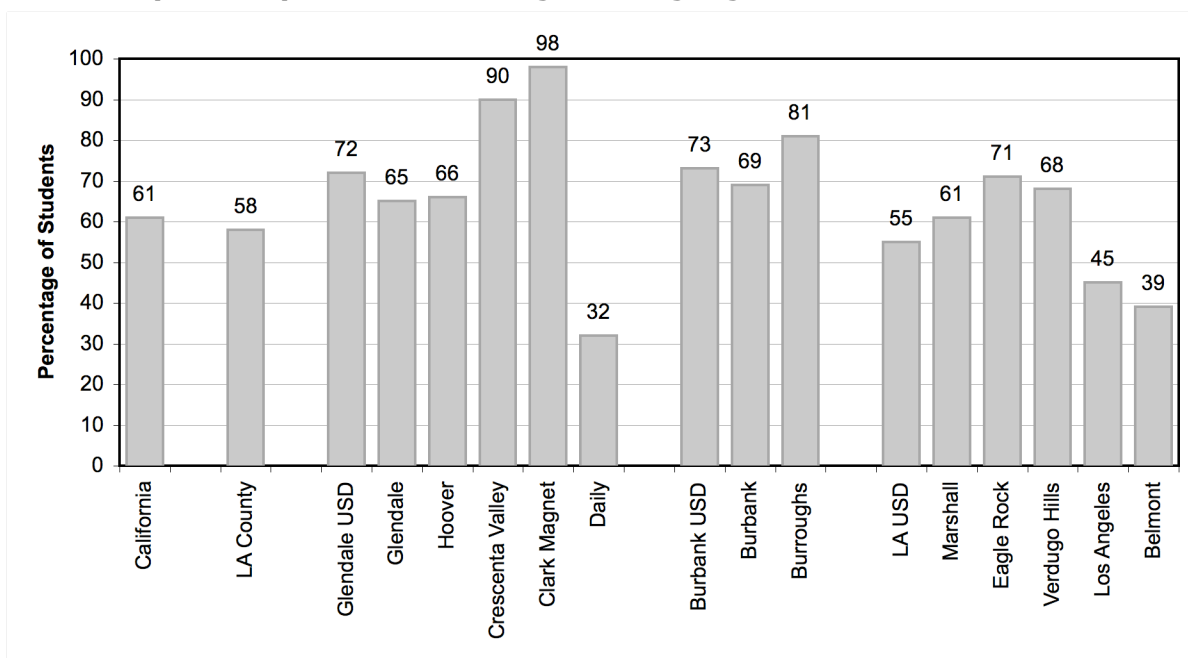
**Figure 3.7. Percentage of Students Classified as English Learners, 2007**



*Data Source: California Department of Education*

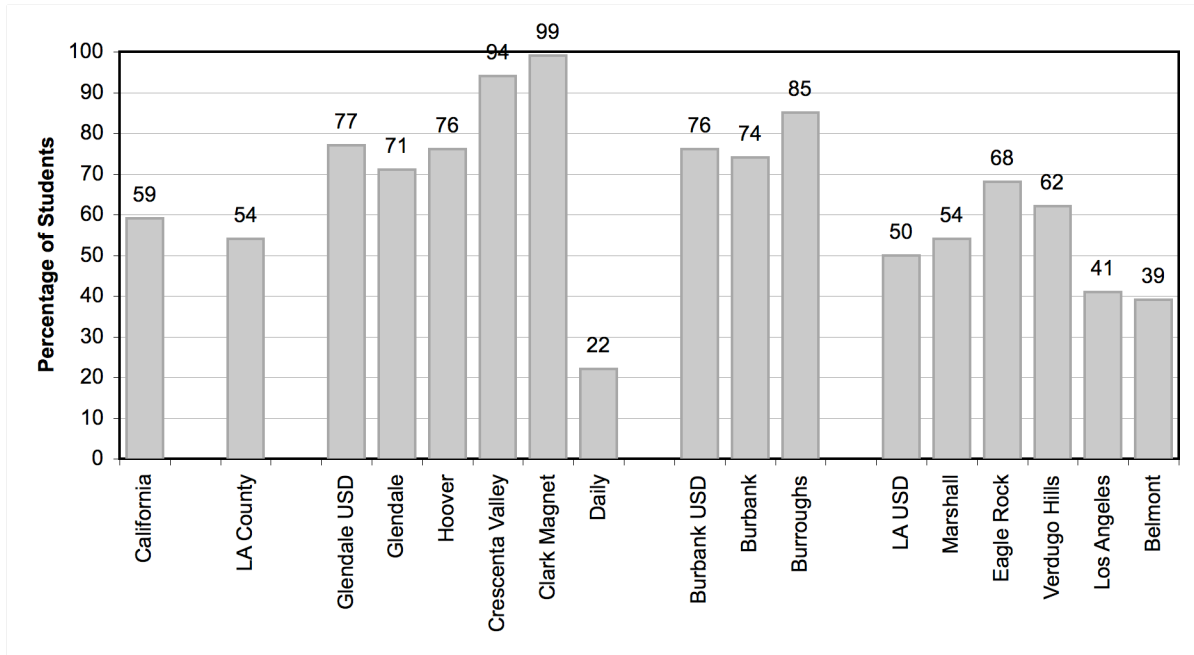
The next two graphs show the percentage of students passing the California High School Exit Examination (CAHSEE) in 2006-2007 during any administration of the test. In the Glendale Unified School District, Clark Magnet and Crescenta Valley High Schools have particularly high pass rates on both the English Language Arts test and the Mathematics test.

**Figure 3.8. Percentage of Students Passing California High School Exit Examination (CAHSEE), 2005-2006: English Language Arts**



*Data Source: California Department of Education*

**Figure 3.9. Percentage of Students Passing California High School Exit Examination (CAHSEE), 2005-2006: Mathematics**



*Data Source: California Department of Education*